

Ropeworks

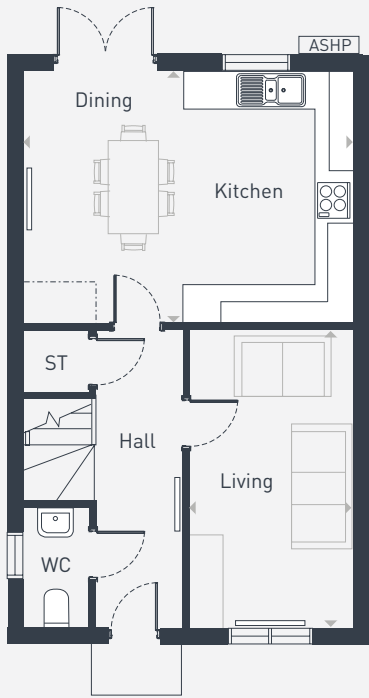
The Arundel 4 bedroom home



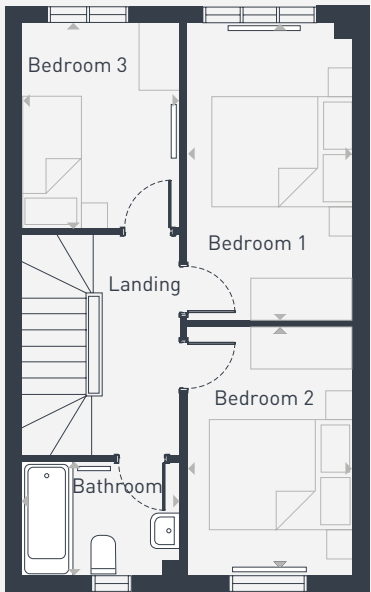


Plots as drawn: 27, 28, 29, 31, 32, 33 & 34
Handed: 30, 31, 35 & 36

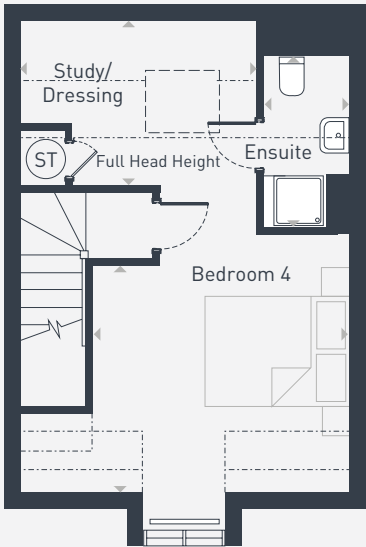
110.83 sq m / 1193 sq ft



GROUND FLOOR



FIRST FLOOR



SECOND FLOOR

ST: Store WC: Water Closet ASHP: Air Source Heat Pump

DIMENSIONS	m	ft
Kitchen/Dining	4.82m x 3.73m	15'9" x 12'2"
Living	4.40m x 2.36m	14'5" x 7'8"
Bathroom	2.32m x 1.74m	7'7" x 5'8"
Bedroom 1	4.42m x 2.39m	14'6" x 7'10"

DIMENSIONS	m	ft
Bedroom 2	3.71m x 2.39m	12'2" x 7'10"
Bedroom 3	3.07m x 2.32m	10'0" x 7'7"
Bedroom 4	4.82m x 4.57m	15'8" x 14'9"
Ensuite	2.50m x 1.21m	8'2" x 3'11"
Study/Dressing Area	3.59m max x 2.55m max	11'7" max x 8'3" max



0161 763 5066 | placesforpeople.co.uk/ropeworks
Brunswick Street, Heywood OL10 1EZ

Please note: All layouts and floor plans, configurations, maps and information are intended for guidance only and accuracy of this information cannot be relied upon by prospective purchasers who must make their own enquiries to satisfy themselves by inspection or otherwise as to the correct detail.