

Ashdown Gardens

The Whitehorse 3 bedroom house



Artist's Impression

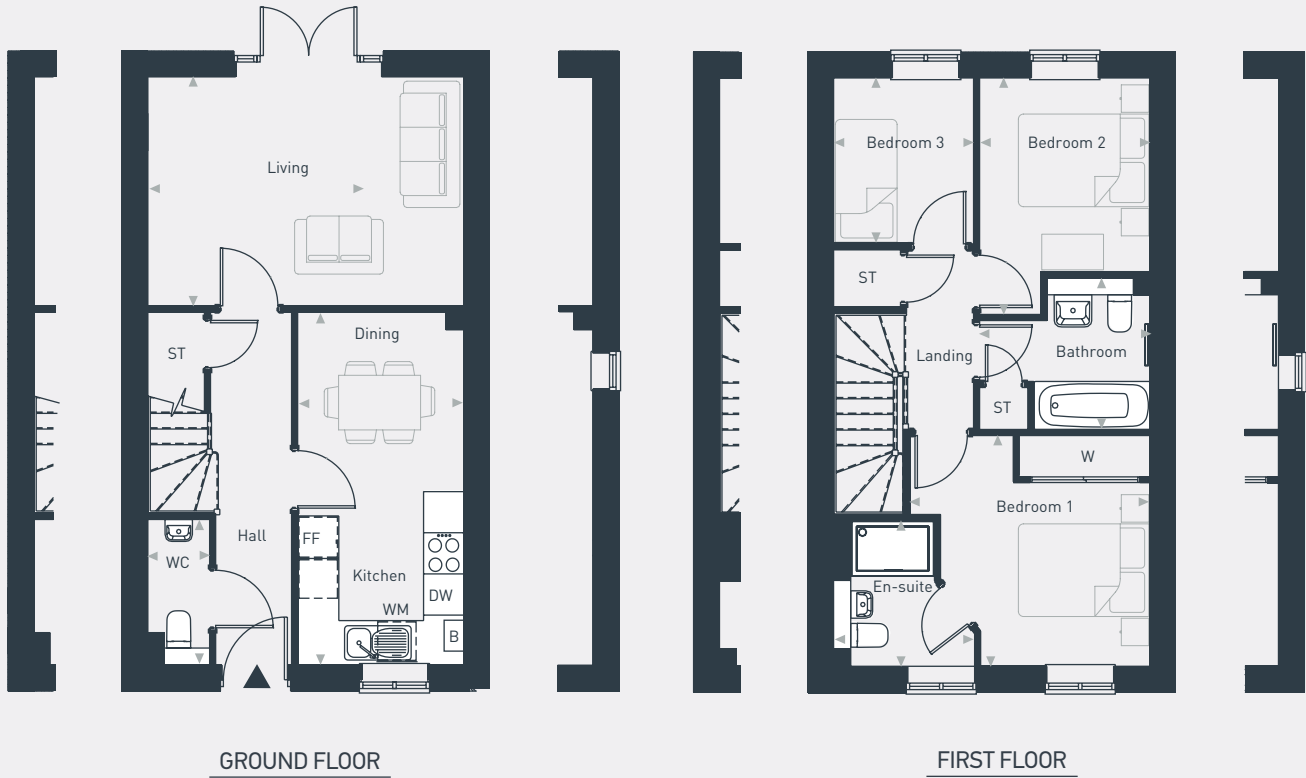
Ashdown Gardens



The Whitehorse 3 bedroom house

Plot as drawn: 48, 52, 58, 60, 64, 65, 66, 71 and 75
 Handed: 46, 47, 50, 51, 54, 57, 59, 63, 64, 68, 69, 70 and 74

79.16 sq.m / 852 sq.ft



FF: Fridge/Freezer ST: Store DW: Dishwasher WM: Washing Machine WC: Water Closet B: Boiler

DIMENSIONS	m	ft
Living	4.61m x 3.33m	15'1" x 10'11"
Kitchen/Dining	2.43m x 5.15m	7'11" x 16'10"
WC	0.90m x 1.87m	2'11" x 6'1"

DIMENSIONS	m	ft
Bedroom 1	3.52m x 3.36m	11'6" x 11'0"
En-suite	2.12m x 2.05m	6'11" x 6'8"
Bedroom 2	2.49m x 3.44m	8'2" x 11'3"
Bedroom 3	2.03m x 2.41m	6'8" x 7'11"
Bathroom	2.49m x 2.20m	8'2" x 7'2"



01793 205 027 | placesforpeople.co.uk/ashdown-gardens
 Marlborough Park, Pipers Way, Old Town, Swindon

Please note: All layouts and floor plans, configurations, maps and information are intended for guidance only and accuracy of this information cannot be relied upon by prospective purchasers who must make their own enquiries to satisfy themselves by inspection or otherwise as to the correct detail. The artist's impression is intended as a guide only and that actual finishes may vary. For more details, please speak to your sales advisor.