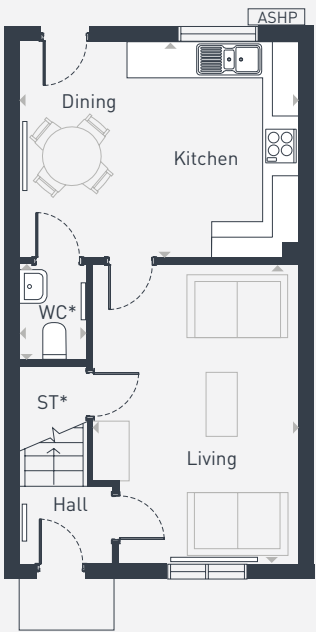




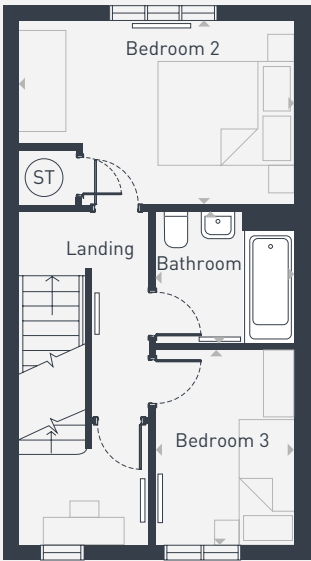
Plots as drawn: 1, 2 & 10
Handed: 3, 4, 11 & 12

88.44 sq m / 952 sq ft

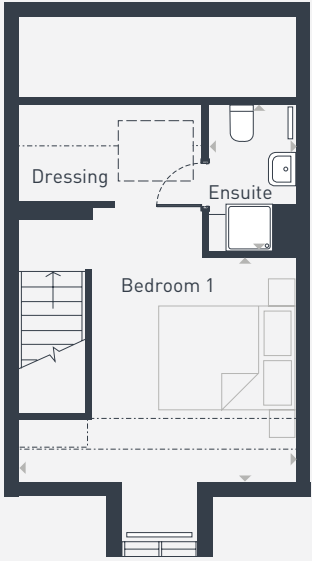
* Reduced head height to WC
* Reduced head space to store cupboard



GROUND FLOOR



FIRST FLOOR



SECOND FLOOR

ST: Store WC: Water Closet ASHP: Air Source Heat Pump

DIMENSIONS	m	ft
Kitchen/Dining	4.09m x 3.26m	13'5" x 10'8"
Living	4.56m x 2.99m	14'11" x 9'9"
WC	1.43m x 0.97m	4'8" x 3'2"

DIMENSIONS	m	ft
Bedroom 1	4.09m x 3.50m	13'11" x 11'5"
Bedroom 2	2.99m x 2.74m	9'9" x 8'11"
Bedroom 3	2.99m x 1.90m	9'9" x 6'2"
Bathroom	2.04m x 1.98m	6'8" x 6'5"
Ensuite	2.25m x 1.21m	7'4" x 3'11"



0161 763 5066 | placesforpeople.co.uk/ropeworks
Brunswick Street, Heywood OL10 1EZ

Please note: All layouts and floor plans, configurations, maps and information are intended for guidance only and accuracy of this information cannot be relied upon by prospective purchasers who must make their own enquiries to satisfy themselves by inspection or otherwise as to the correct detail.