

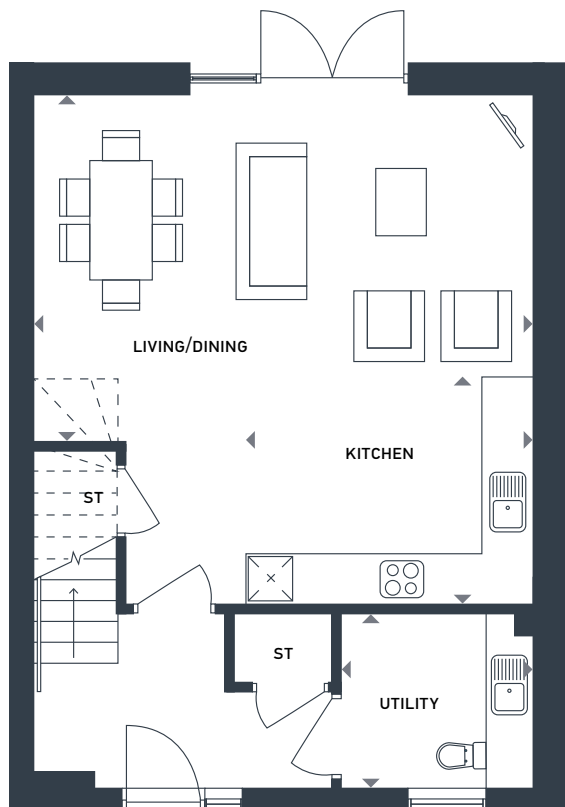
# Tudsbery Court

## 3 Bedroom House

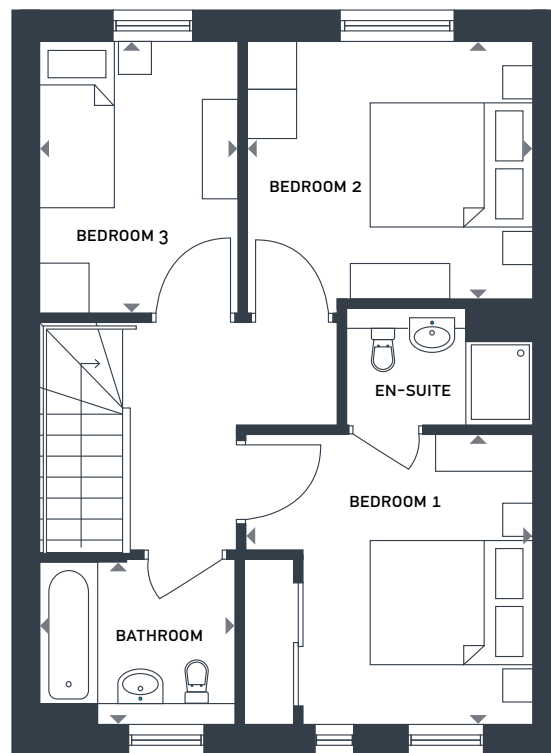
Plots 61-65 & 137-140

Internal area

96sq.m / 1033sq.ft



GROUND FLOOR



FIRST FLOOR

Dimensions (max)	m	ft
Living / Dining	5.93m x 4.13m	19'6" x 13'7"
Kitchen	3.41m x 2.70m	11'2" x 8'10"
Bedroom 1	3.51m x 3.53m	11'6" x 11'7"
Bedroom 2	3.48m x 3.09m	11'5" x 10'2"
Bedroom 3	2.40m x 3.28m	7'11" x 10'9"



[tudsberycourt.co.uk](https://tudsberycourt.co.uk)

[sales@tudsberycourt.co.uk](mailto:sales@tudsberycourt.co.uk)

Please note: All layouts and floor plans, configurations, maps and information are intended for guidance only and accuracy of this information cannot be relied upon by prospective purchasers who must make their own enquiries to satisfy themselves by inspection or otherwise as to the correct detail. Sizes and dimensions approximate and subject to change.

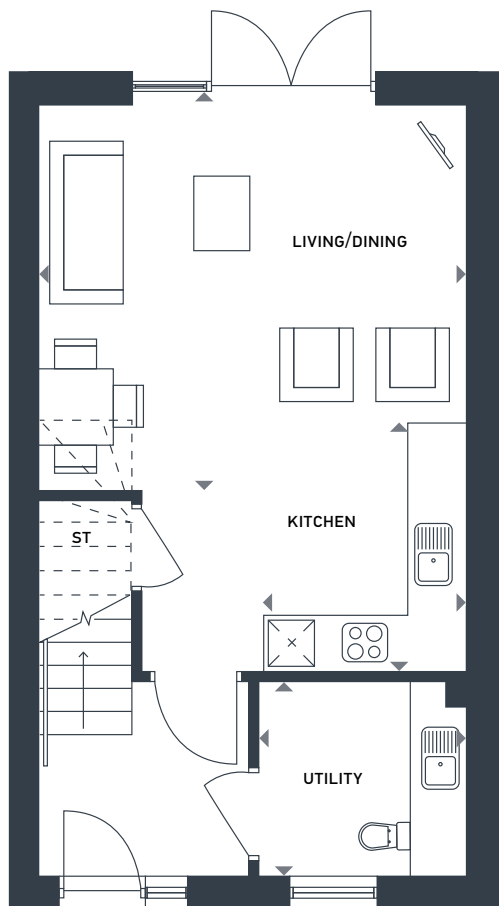
# Tudsbery Court

## 2 Bedroom House

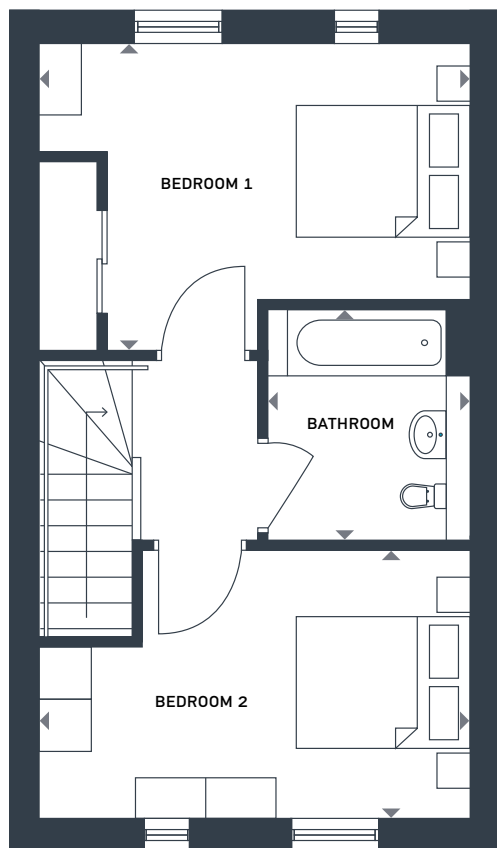
Plots 66-73

Internal area

74sq.m / 796sq.ft



GROUND FLOOR



FIRST FLOOR

Dimensions (max)	m	ft
Living / Dining	4.58m x 4.12m	15'1" x 13'7"
Kitchen	2.16m x 2.66m	7'1" x 8'9"
Bedroom 1	4.63m x 3.28m	15'3" x 10'9"
Bedroom 2	4.63m x 2.87m	15'3" x 9'5"



[tudsberycourt.co.uk](https://tudsberycourt.co.uk)

[sales@tudsberycourt.co.uk](mailto:sales@tudsberycourt.co.uk)

Please note: All layouts and floor plans, configurations, maps and information are intended for guidance only and accuracy of this information cannot be relied upon by prospective purchasers who must make their own enquiries to satisfy themselves by inspection or otherwise as to the correct detail. Sizes and dimensions approximate and subject to change.

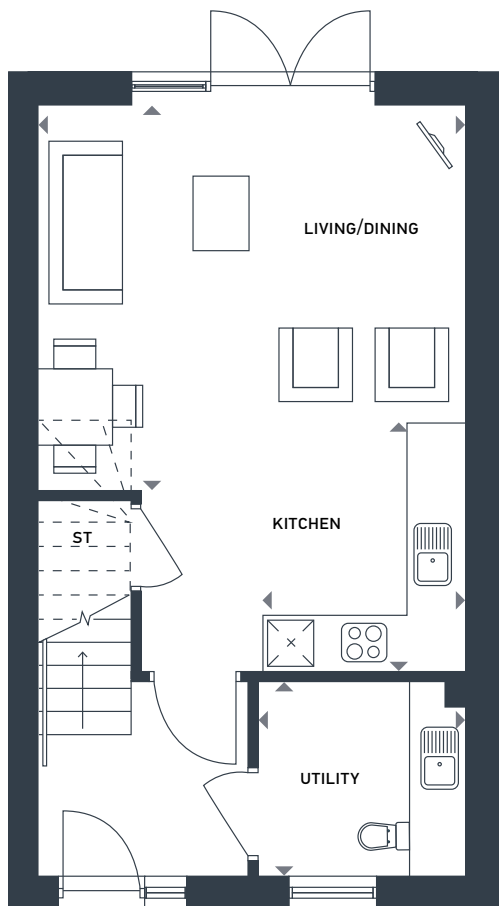
# Tudsbery Court

## 2 Bedroom House

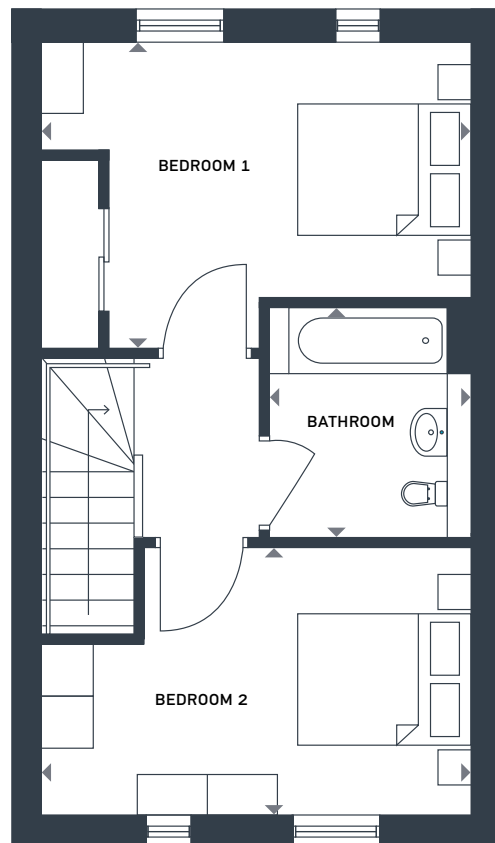
Plots 78-81 & 118-121

Internal area

74sq.m / 796sq.ft



GROUND FLOOR



FIRST FLOOR

Dimensions (max)	m	ft
Living / Dining	4.53m x 4.14m	14'11" x 13'7"
Kitchen	2.19m x 2.66m	7'2" x 8'9"
Bedroom 1	4.58m x 3.28m	15'1" x 10'9"
Bedroom 2	4.58m x 2.87m	15'1" x 9'5"



[tudsberycourt.co.uk](https://tudsberycourt.co.uk)

[sales@tudsberycourt.co.uk](mailto:sales@tudsberycourt.co.uk)

Please note: All layouts and floor plans, configurations, maps and information are intended for guidance only and accuracy of this information cannot be relied upon by prospective purchasers who must make their own enquiries to satisfy themselves by inspection or otherwise as to the correct detail. Sizes and dimensions approximate and subject to change.

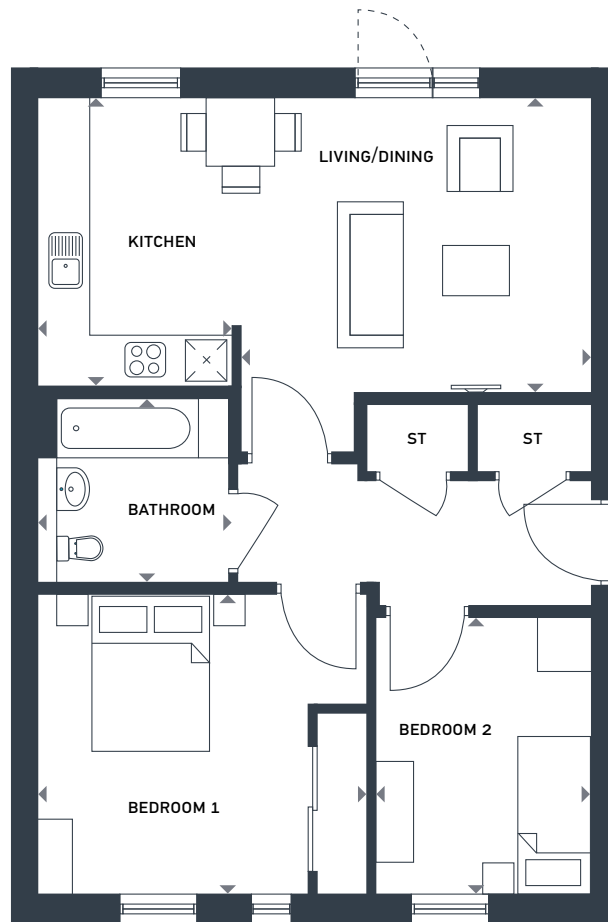
# Tudsbery Court

## 2 Bed Apartment

Plot 134-136

Internal area

62sq.m / 667sq.ft



134 - GROUND

135 - 1ST FLOOR

136 - 2ND FLOOR

Dimensions (max)	m	ft
Living / Dining	4.13m x 3.49m	13'7" x 11'6"
Kitchen	2.30m x 3.40m	7'7" x 11'2"
Bedroom 1	3.91m x 3.56m	12'10" x 11'8"
Bedroom 2	2.53m x 3.28m	8'4" x 10'9"



[tudsberycourt.co.uk](https://tudsberycourt.co.uk)

[sales@tudsberycourt.co.uk](mailto:sales@tudsberycourt.co.uk)

Please note: All layouts and floor plans, configurations, maps and information are intended for guidance only and accuracy of this information cannot be relied upon by prospective purchasers who must make their own enquiries to satisfy themselves by inspection or otherwise as to the correct detail. Sizes and dimensions approximate and subject to change.

# Tudsbery Court

## 2 Bed Apartment

Plot 131-133

Internal area

79sq.m / 850sq.ft



131 - GROUND

132 - 1ST FLOOR

133 - 2ND FLOOR

Dimensions (max)	m	ft
Living / Dining	6.04m x 3.55m	19'9" x 11'8"
Kitchen	3.64m x 1.99m	11'11" x 6'7"
Bedroom 1	4.30m x 3.33m	14'1" x 10'11"
Bedroom 2	3.33m x 3.55m	10'11" x 11'8"



[tudsberycourt.co.uk](http://tudsberycourt.co.uk)

[sales@tudsberycourt.co.uk](mailto:sales@tudsberycourt.co.uk)

Please note: All layouts and floor plans, configurations, maps and information are intended for guidance only and accuracy of this information cannot be relied upon by prospective purchasers who must make their own enquiries to satisfy themselves by inspection or otherwise as to the correct detail. Sizes and dimensions approximate and subject to change.

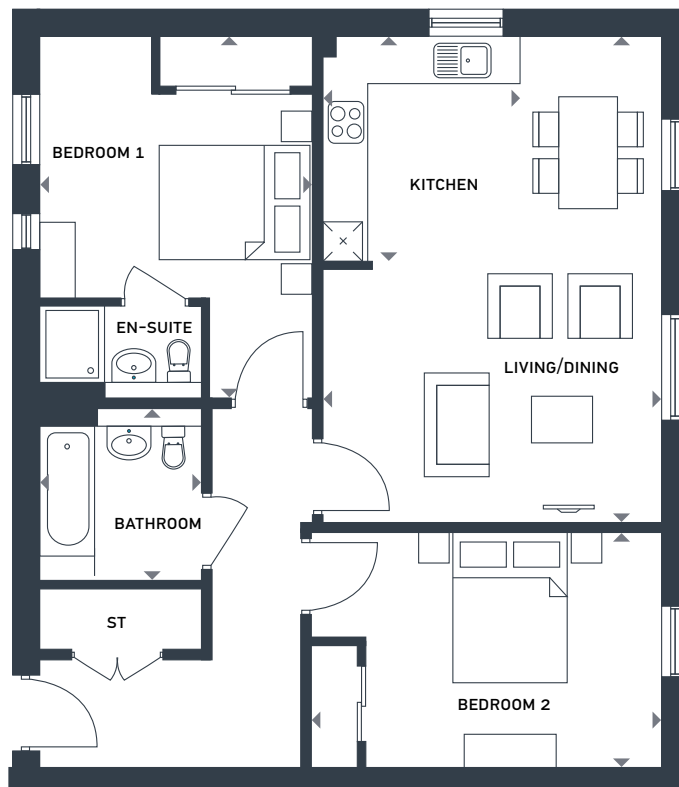
# Tudsbery Court

## 2 Bed Apartment

Plot 128-130

Internal area

79sq.m / 850sq.ft



128 - GROUND

129 - 1ST FLOOR

130 - 2ND FLOOR

Dimensions (max)	m	ft
Living / Dining	4.42m x 6.36m	14'6" x 20'11"
Kitchen	2.59m x 2.92m	8'6" x 9'7"
Bedroom 1	3.55m x 4.72m	11'8" x 15'6"
Bedroom 2	4.57m x 3.08m	15'0" x 10'1"



[tudsberycourt.co.uk](https://tudsberycourt.co.uk)

[sales@tudsberycourt.co.uk](mailto:sales@tudsberycourt.co.uk)

Please note: All layouts and floor plans, configurations, maps and information are intended for guidance only and accuracy of this information cannot be relied upon by prospective purchasers who must make their own enquiries to satisfy themselves by inspection or otherwise as to the correct detail. Sizes and dimensions approximate and subject to change.

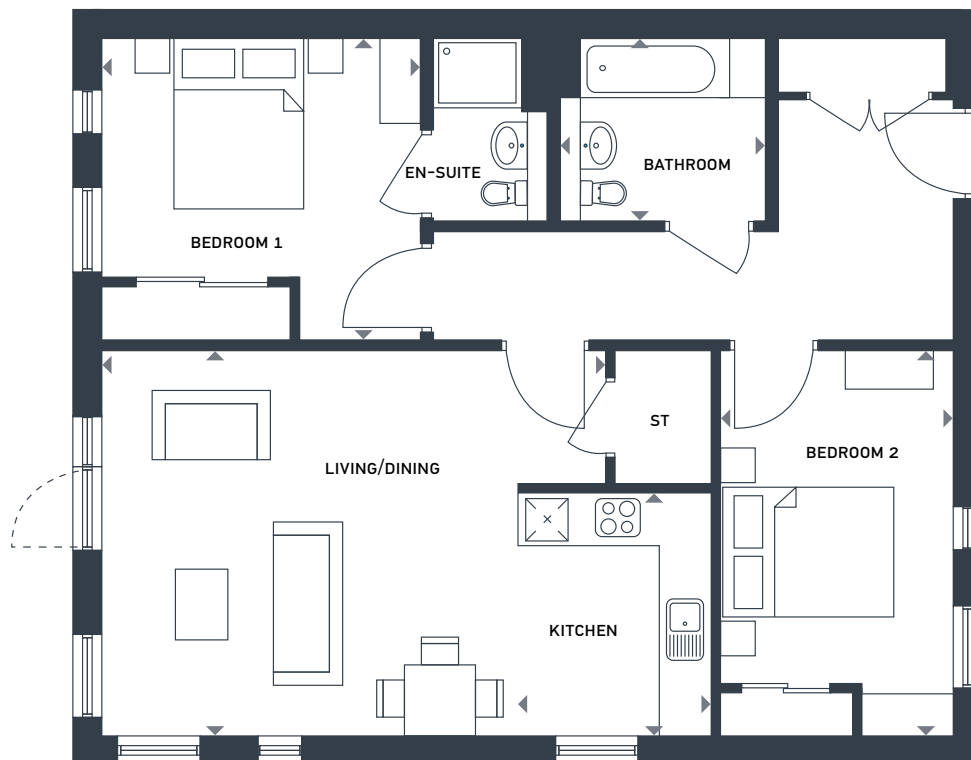
# Tudsbery Court

## 2 Bed Apartment

Plot 147-149

Internal area

75sq.m / 807sq.ft



147 - GROUND

148 - 1ST FLOOR

149 - 2ND FLOOR

Dimensions (max)	m	ft
Living / Dining	5.68m x 4.31m	18'7" x 14'2"
Kitchen	2.18m x 2.72m	7'2" x 8'11"
Bedroom 1	3.57m x 3.44m	11'9" x 11'4"
Bedroom 2	2.60m x 4.31m	8'7" x 14'2"



[tudsberycourt.co.uk](https://tudsberycourt.co.uk)

[sales@tudsberycourt.co.uk](mailto:sales@tudsberycourt.co.uk)

Please note: All layouts and floor plans, configurations, maps and information are intended for guidance only and accuracy of this information cannot be relied upon by prospective purchasers who must make their own enquiries to satisfy themselves by inspection or otherwise as to the correct detail. Sizes and dimensions approximate and subject to change.

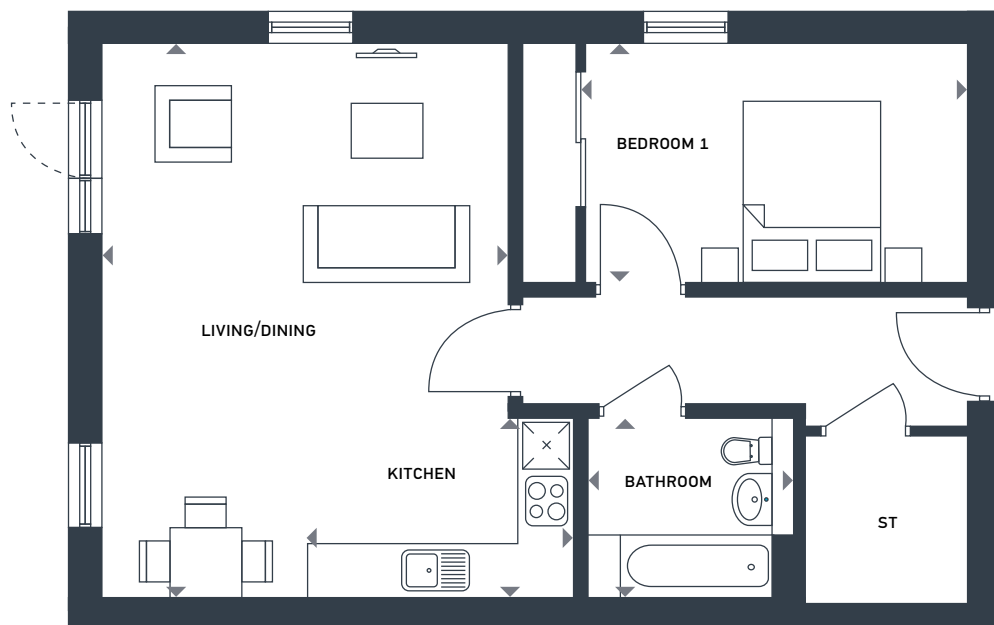
# Tudsbery Court

## 1 Bed Apartment

Plot 144-146

Internal area

58sq.m / 624sq.ft



144 - GROUND

145 - 1ST FLOOR

146 - 2ND FLOOR

Dimensions (max)	m	ft
Living / Dining	4.51m x 6.15m	14'10" x 20'2"
Kitchen	2.96m x 1.99m	9'9" x 6'7"
Bedroom 1	4.22m x 2.65m	13'10" x 8'8"



[tudsberycourt.co.uk](https://tudsberycourt.co.uk)

[sales@tudsberycourt.co.uk](mailto:sales@tudsberycourt.co.uk)

Please note: All layouts and floor plans, configurations, maps and information are intended for guidance only and accuracy of this information cannot be relied upon by prospective purchasers who must make their own enquiries to satisfy themselves by inspection or otherwise as to the correct detail. Sizes and dimensions approximate and subject to change.



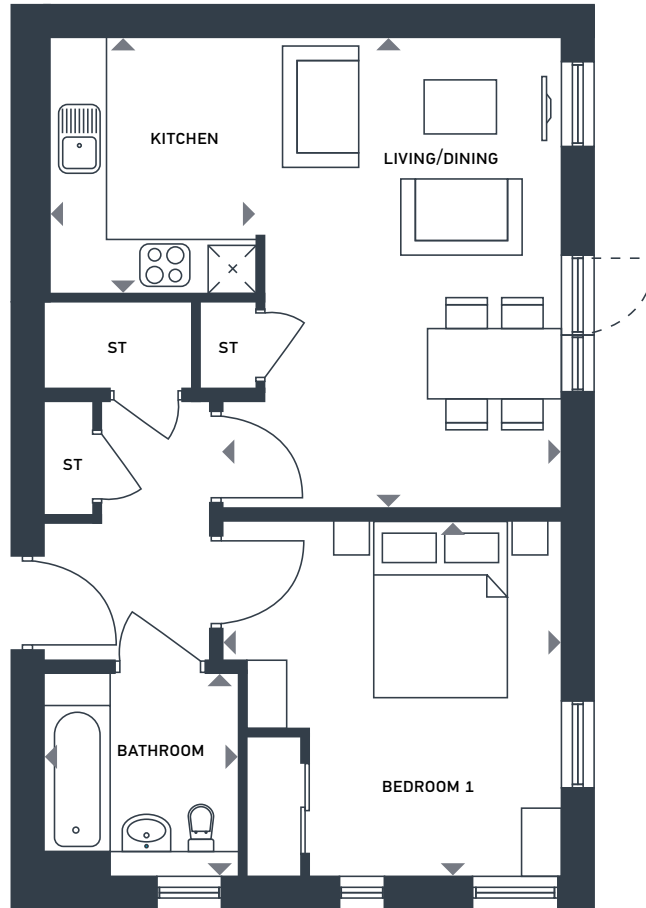
# Tudsbery Court

## 1 Bed Apartment

Plot 141-143

Internal area

52sq.m / 560sq.ft



141 - GROUND

142 - 1ST FLOOR

143 - 2ND FLOOR

Dimensions (max)	m	ft
Living / Dining	3.74m x 5.20m	12'3" x 17'1"
Kitchen	2.34m x 2.82m	7'8" x 9'3"
Bedroom 1	3.74m x 3.89m	12'3" x 12'9"



[tudsberycourt.co.uk](https://tudsberycourt.co.uk)

[sales@tudsberycourt.co.uk](mailto:sales@tudsberycourt.co.uk)

Please note: All layouts and floor plans, configurations, maps and information are intended for guidance only and accuracy of this information cannot be relied upon by prospective purchasers who must make their own enquiries to satisfy themselves by inspection or otherwise as to the correct detail. Sizes and dimensions approximate and subject to change.