

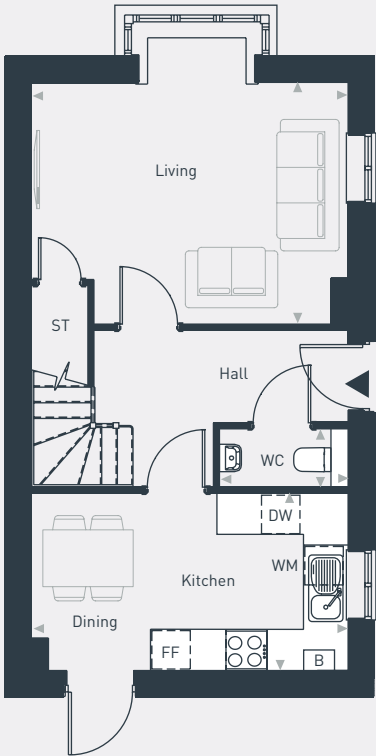
Ashdown Gardens



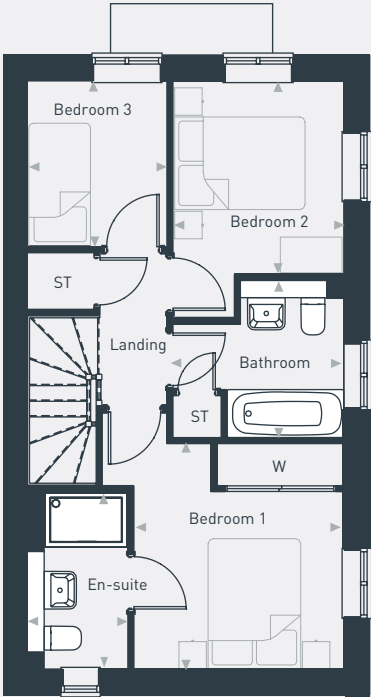
The Barbury 3 bedroom house

Plots as drawn: 53
Flipped North to South: 55, 56, 62 and 67

80.16 sq.m / 863 sq.ft



GROUND FLOOR



FIRST FLOOR

FF: Fridge/Freezer ST: Store DW: Dishwasher WM: Washing Machine WC: Water Closet B: Boiler

DIMENSIONS	m	ft
Living	4.61m x 3.52m	15'1" x 11'6"
Kitchen/Dining	4.61m x 2.49m	15'1" x 8'2"
WC	1.87m x 0.93m	6'1" x 3'0"

DIMENSIONS	m	ft
Bedroom 1	3.28m x 3.06m	10'9" x 10'0"
En-suite	1.47m x 2.49m	4'9" x 8'2"
Bedroom 2	3.44m x 2.49m	11'3" x 8'2"
Bedroom 3	2.45m x 2.49m	6'9" x 8'0"
Bathroom	2.41m x 2.03m	7'10" x 6'7"



01793 205 027 | placesforpeople.co.uk/ashdown-gardens
Marlborough Park, Pipers Way, Old Town, Swindon

Please note: All layouts and floor plans, configurations, maps and information are intended for guidance only and accuracy of this information cannot be relied upon by prospective purchasers who must make their own enquiries to satisfy themselves by inspection or otherwise as to the correct detail. The artist's impression is intended as a guide only and that actual finishes may vary. For more details, please speak to your sales advisor.