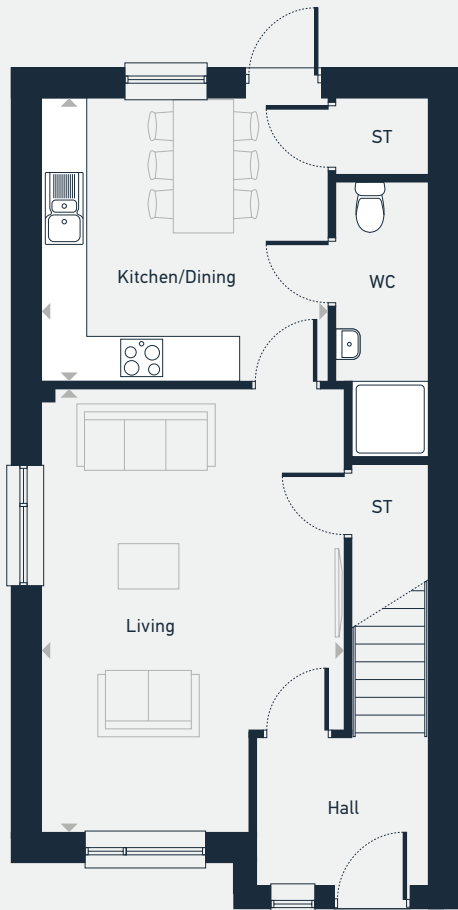


Black Isle View

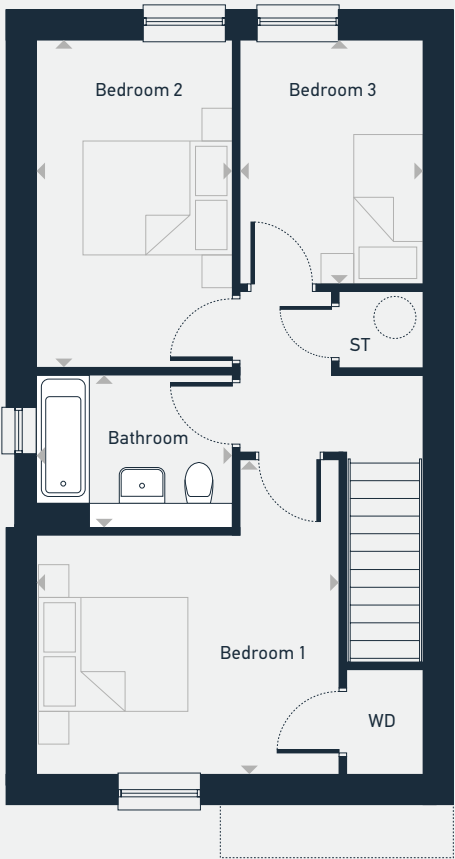
Dalroy 3 bedroom home

Plots as drawn: 30 and 59
Plots handed: 31 and 58

101 sq m / 1087.15 sq ft



GROUND FLOOR



FIRST FLOOR

DIMENSIONS	m	ft
Living	5.88m x 4.00m	19'3" x 13'5"
Kitchen/Dining	3.98m x 3.75m	13'0" x 12'3"

DIMENSIONS	m	ft
Bedroom 1	4.12m x 4.00 m	13'6" x 13'5"
Bedroom 2	4.32m x 2.60 m	14'2" x 8'6"
Bedroom 3	3.20m x 2.40 m	10'6" x 7'10"
Bathroom	2.60 m x 2.00 m	8'6" x 6'6"



07940 087 354 | blackisleviewsales@placesforpeople.co.uk
Loch Avenue, Stratton, Inverness, IV2 7BX

Please note: All layouts and floor plans, configurations, maps and information are intended for guidance only and accuracy of this information cannot be relied upon by prospective purchasers who must make their own enquiries to satisfy themselves by inspection or otherwise as to the correct detail. Sizes and dimensions approximate and subject to change.