

# Thistleton Park

## The Harrington 4 bedroom home

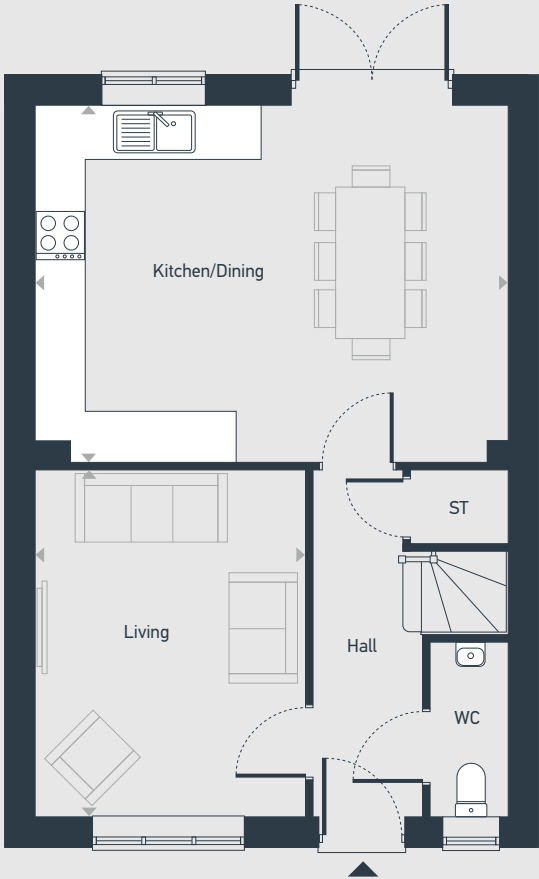


# Thistleton Park

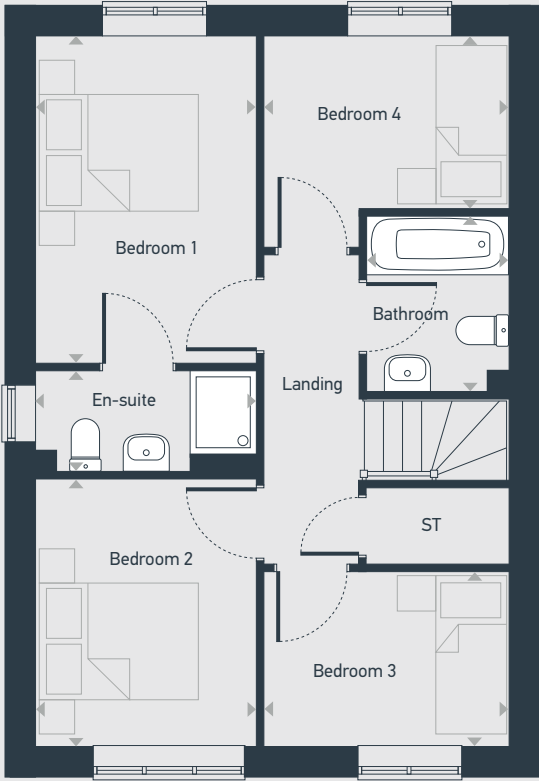
# The Harrington 4 bedroom home

Plots as drawn: 53 and 72  
Handed: 54 and 73

95.24 sq.m / 1,025 sq.ft



GROUND FLOOR



FIRST FLOOR

ST: Store WC: Water Closet  
Storage is at a reduced height

DIMENSIONS	m	ft
Living	4.13m x 3.21m	13'7" x 10'6"
Kitchen/Dining	5.63m x 4.24m	18'6" x 13'11"

DIMENSIONS	m	ft
Bedroom 1	3.90m x 2.63m	12'9" x 8'8"
En-suite	2.63m x 1.20m	8'8" x 3'11"
Bedroom 2	3.17m x 2.63m	10'4" x 8'8"
Bedroom 3	2.91m x 2.07m	9'6" x 6'9"
Bedroom 4	2.91m x 2.06m	9'6" x 6'9"
Bathroom	2.08m x 1.70m	6'10" x 5'7"



07386 683255 | [centralandnorthsales@placesforpeople.co.uk](mailto:centralandnorthsales@placesforpeople.co.uk) | [placesforpeople.co.uk/thistletonpark](https://placesforpeople.co.uk/thistletonpark)  
Lambs Rd, Thornton-Cleveleys FY5 5JR

Please note: All layouts and floor plans, configurations, maps and information are intended for guidance only and accuracy of this information cannot be relied upon by prospective purchasers who must make their own enquiries to satisfy themselves by inspection or otherwise as to the correct detail.