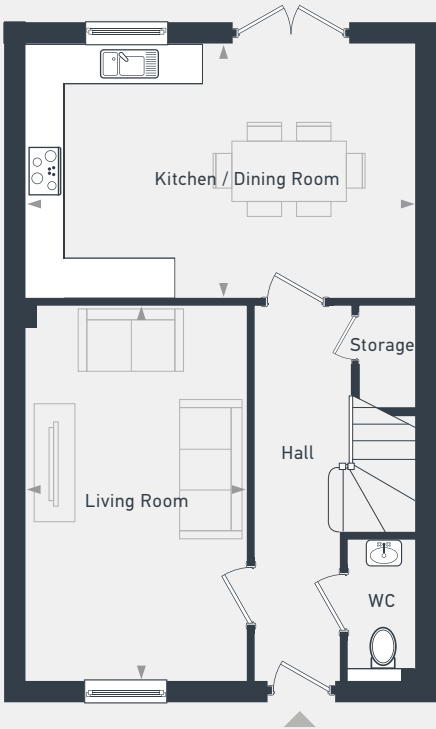
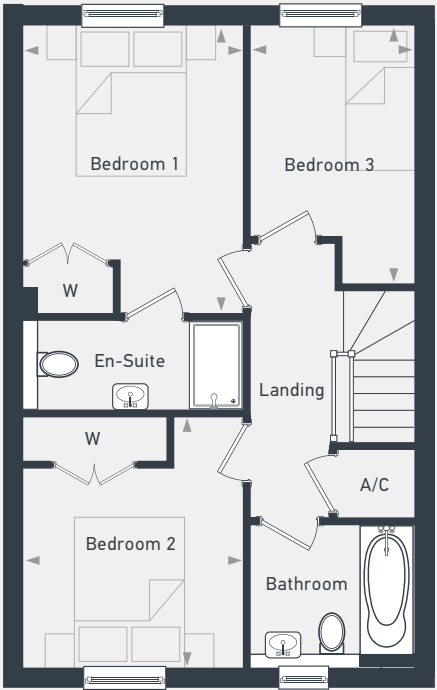


Plots 84, 88 - semi-detached
Plot 84 - handed

94.5 sq m / 1018 sq ft



GROUND FLOOR



FIRST FLOOR

DIMENSIONS	m	
Kitchen / Dining Room	5.37m x 3.50m	17'6" x 11'4"
Living Room	5.17m x 3.02m	16'9" x 9'9"

DIMENSIONS	m	
Bedroom 1	3.92m x 2.99m	12'8" x 9'8"
Bedroom 2	3.43m x 2.99m	11'2" x 9'8"
Bedroom 3	3.50m x 2.26m	11'4" x 7'4"



02380 987 604 | placesforpeople.co.uk/netley-grange
Netley Grange, Grange Road, Netley, Southampton, SO31 5FH

Please note: All layouts and floor plans, configurations, maps and information are intended for guidance only and accuracy of this information cannot be relied upon by prospective purchasers who must make their own enquiries to satisfy themselves by inspection or otherwise as to the correct detail. Sizes and dimensions approximate and subject to change.