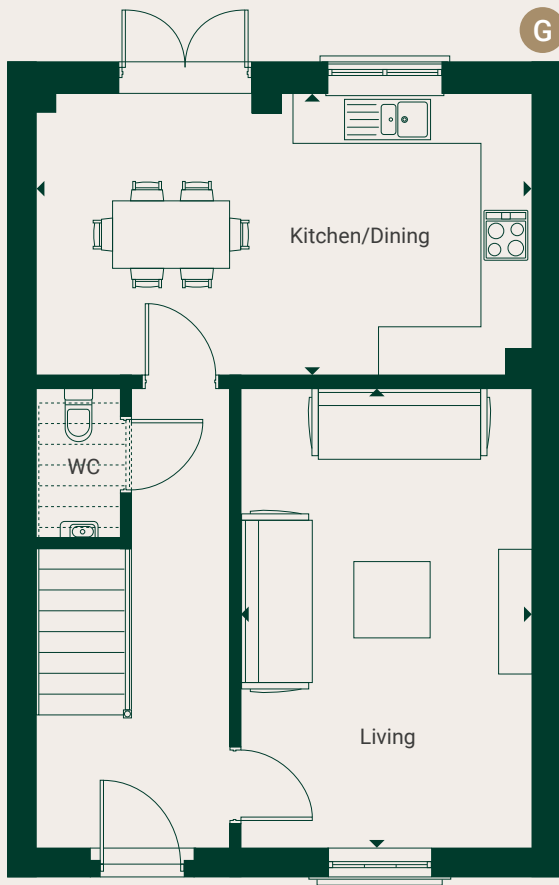


Homes 471–474

3 BEDROOM TERRACED HOUSE

108.3 sq m / 1166 sq ft



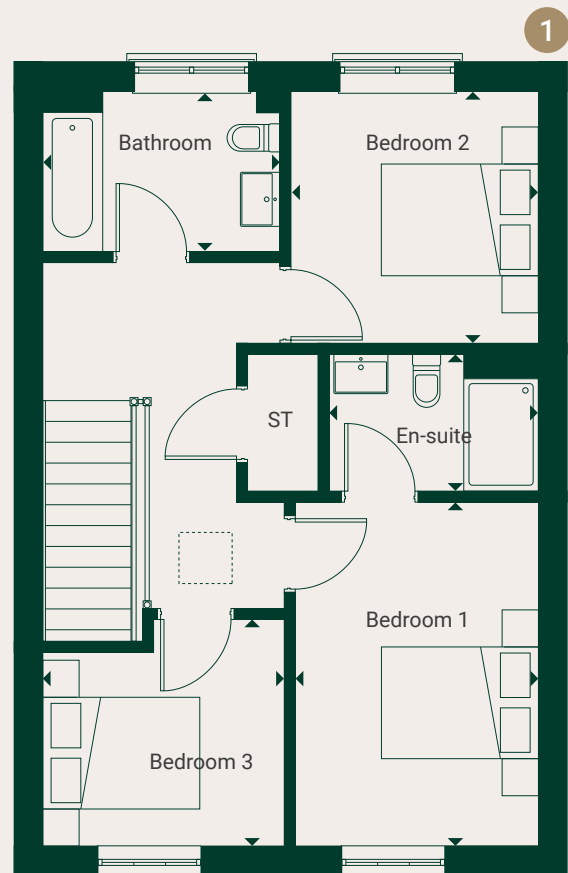
GROUND FLOOR

Kitchen/Dining

6021mm x 3450mm 19' 8" x 11' 3"

Living

5573mm x 3563mm 18' 2" x 11' 7"



FIRST FLOOR

Bedroom 1

4175mm x 3001mm 13' 8" x 9' 10"

Bedroom 2

3100mm x 3050mm 10' 2" x 10' 0"

En-suite

2600mm x 1708mm 8' 5" x 5' 6"

Bedroom 3

2950mm x 2784mm 9' 8" x 9' 1"

Bathroom

2901mm x 1991mm 9' 6" x 6' 6"

All imagery, floor plans, and dimensions are approximate and indicative only.
Each layout and sizes may vary. Each plan may be at a different scale to the others within this brochure.