

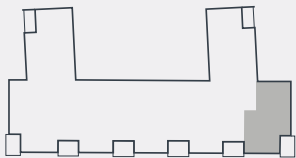
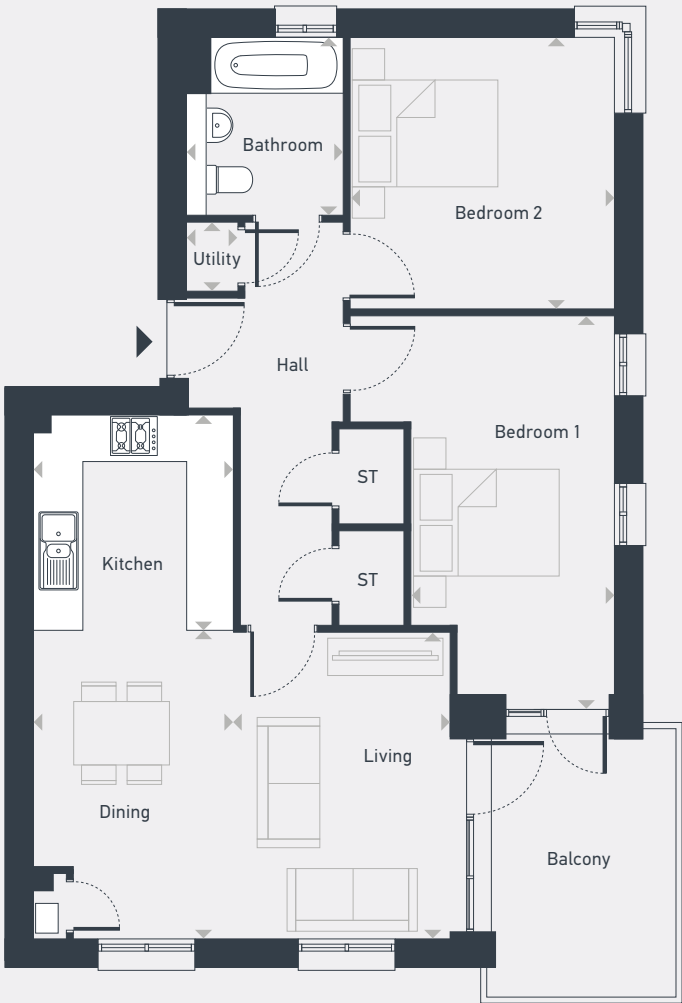
Barton Park

Block G – The Wadham 2 bedroom apartment



As drawn: Plot 285 - First Floor / Plot 289- Second Floor / Plot 293 - Third Floor

70 sq. m / 751 sq. ft



ST: Store

DIMENSIONS	m	ft
Kitchen	2.78m x 2.54m	9'1" x 8'4"
Living	3.93m x 2.54m	12'10" x 8'4"
Dining	3.93m x 2.78m	12'10" x 9'1"
Bedroom 1	5.06m x 3.38m	16'7" x 11'1"
Bedroom 2	3.47m x 3.38m	11'4" x 11'1"
Bathroom	2.28m x 1.99m	7'5" x 6'6"
Utility	0.90m x 0.64m	2'11" x 2'1"



01865 575970 | beckleyplace@placesforpeople.co.uk
Beckley Place, Off Barton Fields Road, Oxford OX3 9FU

Please note: All layouts and floor plans, configurations, maps and information are intended for guidance only and accuracy of this information cannot be relied upon by prospective purchasers who must make their own enquiries to satisfy themselves by inspection or otherwise as to the correct detail.