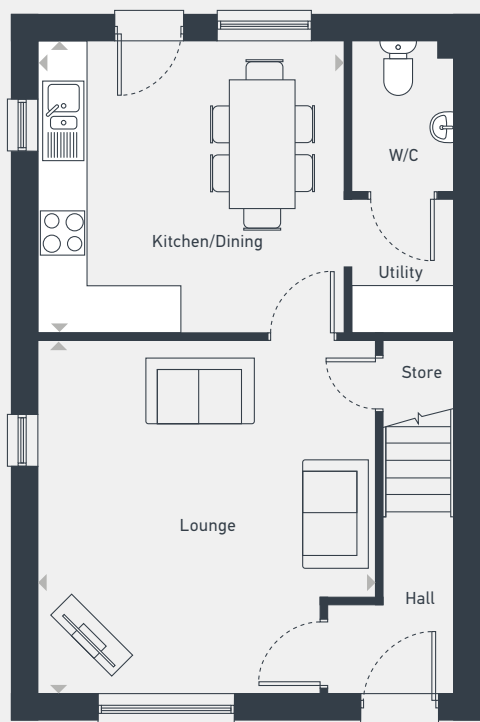


High Moor View

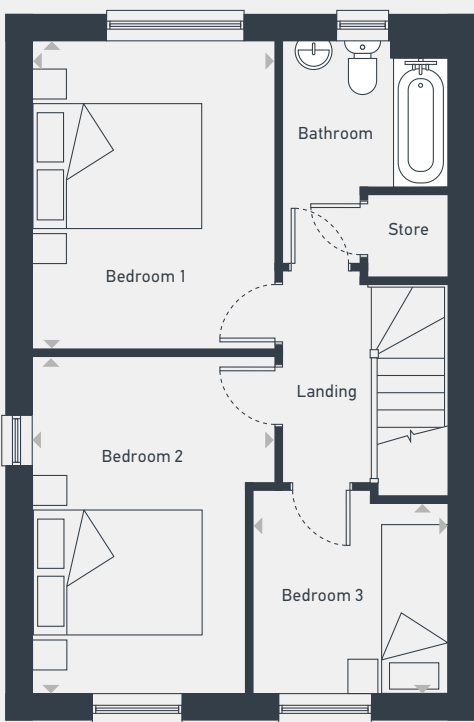
Plots 4 and 5 3 bed house

95.7 sq m / 1,031 sq ft

Plots 4 and 5 – semi-detached
Plot 5 – handed



GROUND FLOOR



FIRST FLOOR

DIMENSIONS	m	ft
Lounge (max)	4.68m x 4.48m	15'4" x 14'8"
Kitchen/Dining	4.05m x 3.88m	13'3" x 12'8"

DIMENSIONS	m	ft
Bedroom 1	4.11m x 3.25m	13'6" x 10'8"
Bedroom 2 (max)	4.49m x 3.25m	14'8" x 10'8"
Bedroom 3 (min)	2.60m x 2.56m	8'6" x 8'5"



placesforpeople.co.uk/highmoorview
High Moor View, Townsend Road, Winkleigh, EX19 8JQ

Please note: Plots at High Moor View comprise a range of homes and external finishes may vary. Purchasers should check the detail of specific plots with our selling agents. All layouts and floor plans, configurations, maps and information are intended for guidance only and accuracy of this information cannot be relied upon by prospective purchasers who must make their own enquiries to satisfy themselves by inspection or otherwise as to the correct detail. Sizes and dimensions approximate and subject to change.