

Hawthorn Gardens at Lower Herne Village

**The Woburn
4 bedroom home**

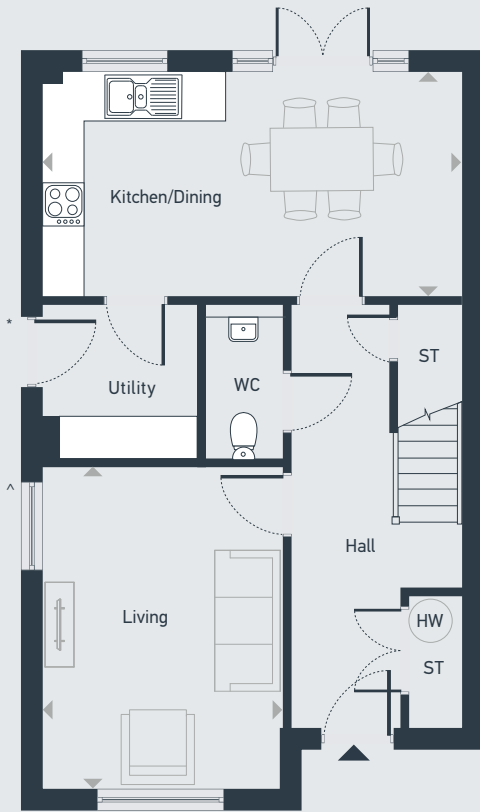


Hawthorn Gardens at Lower Herne Village

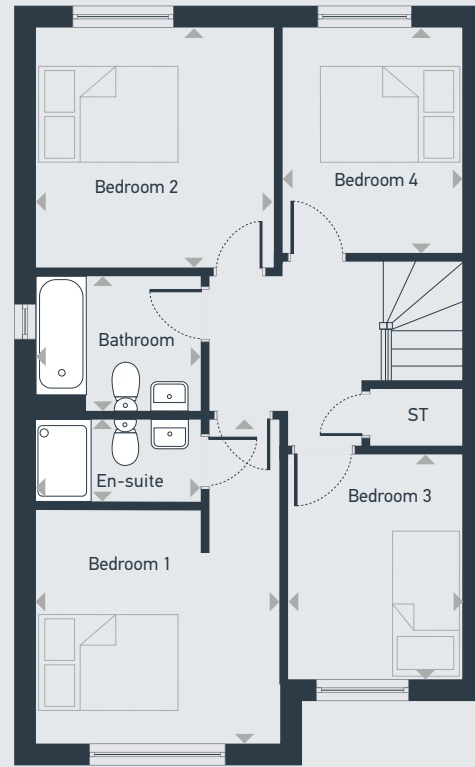
The Woburn 4 bedroom home

Plots as drawn: 18, 20, 22, 24, 31, 33
 Handed: 17, 19, 21, 23, 30, 32

114.5 sq.m / 1232 sq.ft



GROUND FLOOR



FIRST FLOOR

ST: Storage HW: Hot Water Cylinder * Door to plots 20, 24 & 30-33 only ^ Window to Plots 18 & 19 only

DIMENSIONS	m	ft
Kitchen/Dining	5.86m x 3.23m	19'3" x 10'7"
Living	4.55m x 3.39m	14'11" x 11'1"

DIMENSIONS	m	ft
Bedroom 1	4.58m x 3.39m	15'0" x 11'1"
En-suite	2.32m x 1.21m	7'7" x 3'11"
Bedroom 2	3.49m x 3.30m	11'6" x 10'10"
Bedroom 3	3.14m x 2.39m	10'4" x 7'10"
Bedroom 4	3.29m x 2.47m	10'10" x 8'1"
Bathroom	2.32m x 1.91m	7'7" x 6'3"



01227 387 085 | placesforpeople.co.uk/hawthorngardens
 Email: hawthorngardens@placesforpeople.co.uk | 1 Furrows Place, Lower Herne, CT6 7YG

Please note: All layouts and floor plans, configurations, maps and information are intended for guidance only and accuracy of this information cannot be relied upon by prospective purchasers who must make their own enquiries to satisfy themselves by inspection or otherwise as to the correct detail. The artist's impression is intended as a guide only and that actual finishes may vary. For more details, please speak to your sales advisor.