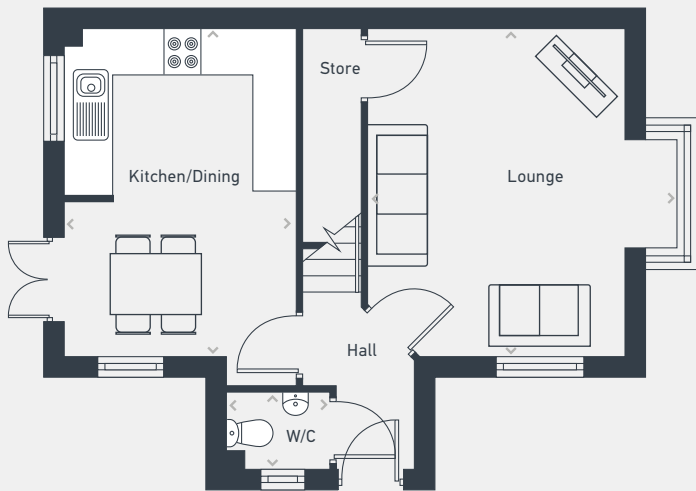


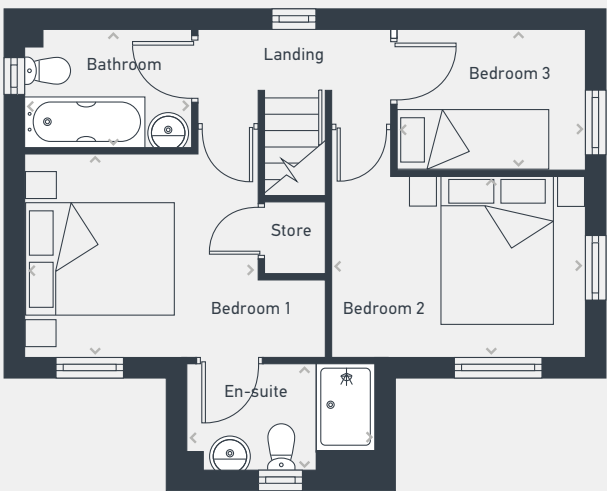
Dominion

The Windsor 3 bed house

80.55 sq m / 867 sq ft



GROUND FLOOR



FIRST FLOOR

| DIMENSIONS | m | ft |
|----------------|---------------|----------------|
| Kitchen/Dining | 4.51m x 3.20m | 14'10" x 10'6" |
| Lounge | 4.51m x 3.53m | 14'10" x 11'7" |
| WC | 1.45m x 1.05m | 4'9" x 3'5" |

| DIMENSIONS | m | ft |
|------------|---------------|--------------|
| Bedroom 1 | 3.20m x 2.83m | 10'6" x 9'3" |
| Bedroom 2 | 3.53m x 2.50m | 11'7" x 8'2" |
| Bedroom 3 | 2.57m x 1.92m | 8'5" x 6'3" |
| Bathroom | 2.29m x 1.59m | 7'6" x 5'2" |
| En-suite | 2.59m x 1.48m | 8'6" x 4'10" |



07812 623 454 | northernnewhomes@lslnewhomes.co.uk
Dominion, Woodfield Way, Doncaster DN4 8SJ

Please note: Plots at Dominion comprise a range of homes and external finishes may vary. Purchasers should check the detail of specific plots with our selling agents. All layouts and floor plans, configurations, maps and information are intended for guidance only and accuracy of this information cannot be relied upon by prospective purchasers who must make their own enquiries to satisfy themselves by inspection or otherwise as to the correct detail. Sizes and dimensions are approximate and subject to change.