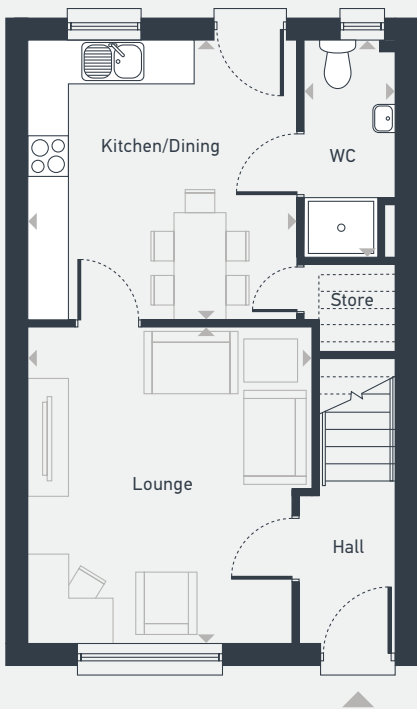


# Woodend Mews

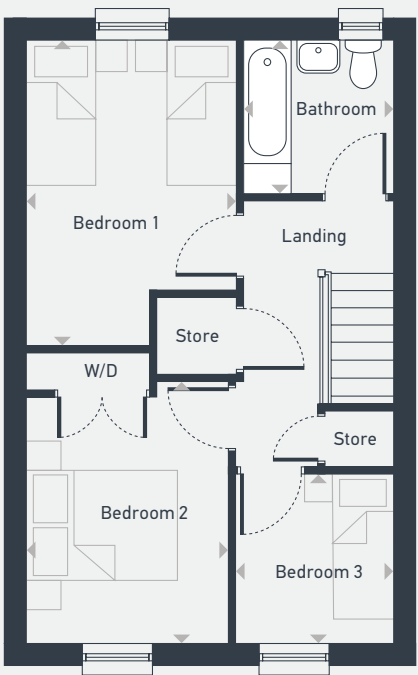
# The Evergreen 3 bedroom home

Plots 33, 34, 35 & 36 — semi-detached  
Plots 33 & 35 — handed

82.0 sq m / 883 sq ft



GROUND FLOOR



FIRST FLOOR

DIMENSIONS	m	ft
Lounge	4.29m x 3.90m	14'1" x 12'10"
Kitchen/Dining	3.81m x 3.70m	12'6" x 12'2"
WC	2.96m x 1.20m	9'9" x 3'11"

DIMENSIONS	m	ft
Bedroom 1	4.16m x 2.80m	13'8" x 9'2"
Bedroom 2	3.56m x 2.70m	11'8" x 8'10"
Bedroom 3	2.30m x 2.20m	7'7" x 7'3"
Bathroom	2.10m x 2.09m	6'11" x 6'10"



07818 976 576 | [placesforpeople.co.uk/woodendmews](https://placesforpeople.co.uk/woodendmews)

Please note: All CGIs, layouts and floor plans, configurations, maps and information are intended for guidance only and accuracy of this information cannot be relied upon by prospective purchasers who must make their own enquiries to satisfy themselves by inspection or otherwise as to the correct detail. Sizes and dimensions approximate and subject to change.