

Mayflower Place

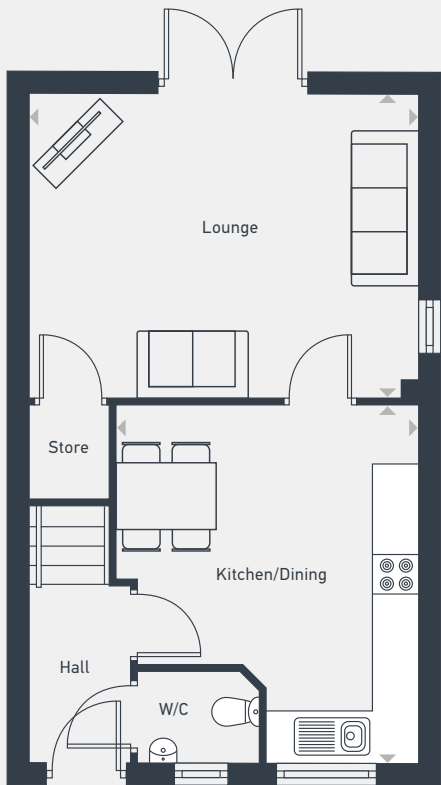
Ashby B
3 bed end terrace



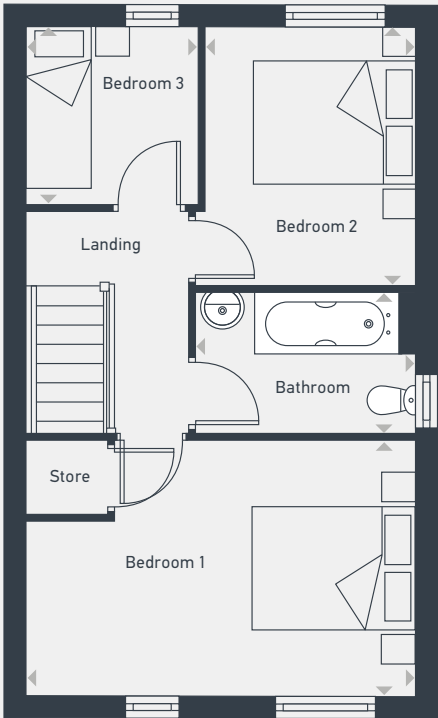
Mayflower Place

Ashby B 3 bed end terrace

70.9 sq m / 763 sq ft



GROUND FLOOR



FIRST FLOOR

DIMENSIONS	m	ft
Kitchen/Dining	4.16m x 3.52m	13'7" x 11'5"
Lounge	4.51m x 3.51m	14'8" x 11'5"
WC	1.02m x 1.44m	3'4" x 4'7"

DIMENSIONS	m	ft
Bathroom	1.66m x 2.57m	5'4" x 8'4"
Bedroom 1	4.49m x 2.94m	14'7" x 9'7"
Bedroom 2	2.99m x 2.44m	9'8" x 8'0"
Bedroom 3	2.05m x 1.96m	6'7" x 6'5"



01805 840 045 | placesforpeople.co.uk/mayflowerplace
Mayflower Place, Hawthorn Avenue, Hull, HU3 5PY

Please note: Plots at Mayflower Place comprise a range of homes and external finishes may vary. Purchasers should check the detail of specific plots with our selling agents. All layouts and floor plans, configurations, maps and information are intended for guidance only and accuracy of this information cannot be relied upon by prospective purchasers who must make their own enquiries to satisfy themselves by inspection or otherwise as to the correct detail. Sizes and dimensions are approximate and subject to change.