

# Hawthorn Gardens at Lower Herne Village

**The Frogmore  
3 bedroom home**

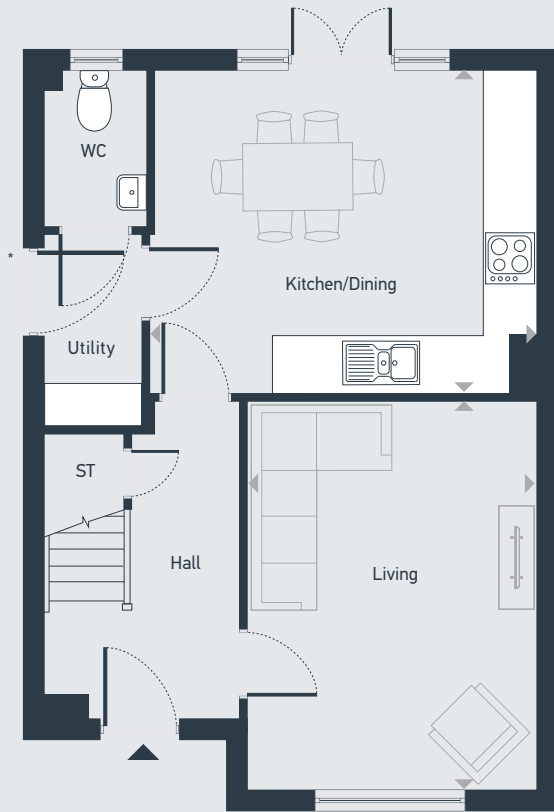


# Hawthorn Gardens at Lower Herne Village

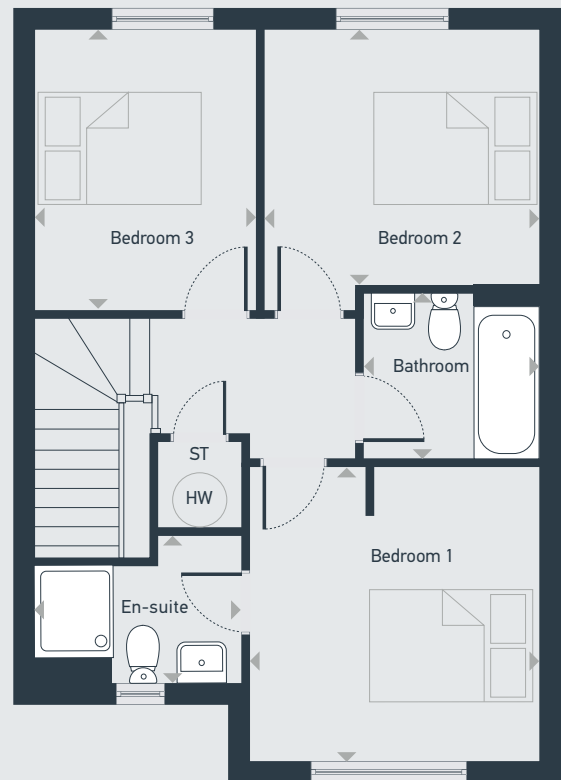
## The Frogmore 3 bedroom home

Plots as drawn: 29  
Handed: 54, 65

92.9 sq.m / 1000 sq.ft



GROUND FLOOR



FIRST FLOOR

ST: Storage HW: Hot Water Cylinder \* Door to Plots 29 & 54 only

DIMENSIONS	m	ft
Living	4.58m x 3.39m	15'0" x 11'2"
Kitchen/Dining	4.52m x 3.73m	14'10" x 12'3"

DIMENSIONS	m	ft
Bedroom 1	3.41m x 3.39m	11'2" x 11'1"
En-suite	2.06m x 1.38m	6'9" x 4'6"
Bedroom 2	3.21m x 2.95m	10'7" x 9'8"
Bedroom 3	3.29m x 2.45m	10'10" x 8'1"
Bathroom	2.19m x 1.94m	7'2" x 6'4"



01227 387 085 | [placesforpeople.co.uk/hawthorngardens](https://placesforpeople.co.uk/hawthorngardens)

Email: [hawthorngardens@placesforpeople.co.uk](mailto:hawthorngardens@placesforpeople.co.uk) | 1 Furrows Place, Lower Herne, CT6 7YG

Please note: All layouts and floor plans, configurations, maps and information are intended for guidance only and accuracy of this information cannot be relied upon by prospective purchasers who must make their own enquiries to satisfy themselves by inspection or otherwise as to the correct detail. The artist's impression is intended as a guide only and that actual finishes may vary. For more details, please speak to your sales advisor.