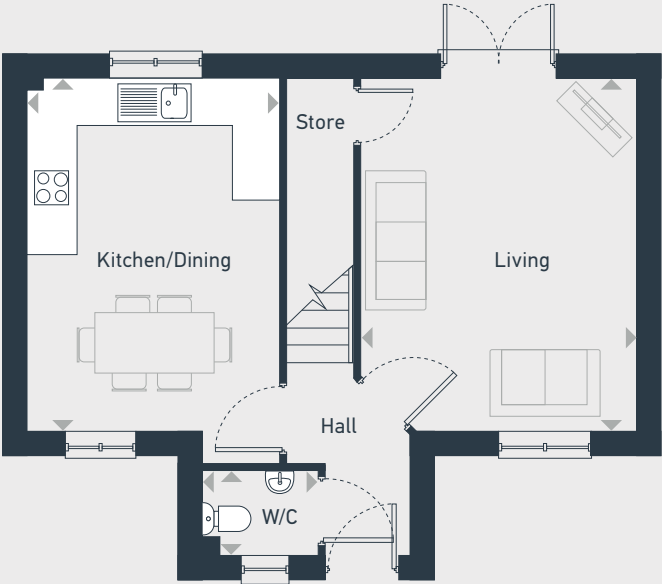


Affinity

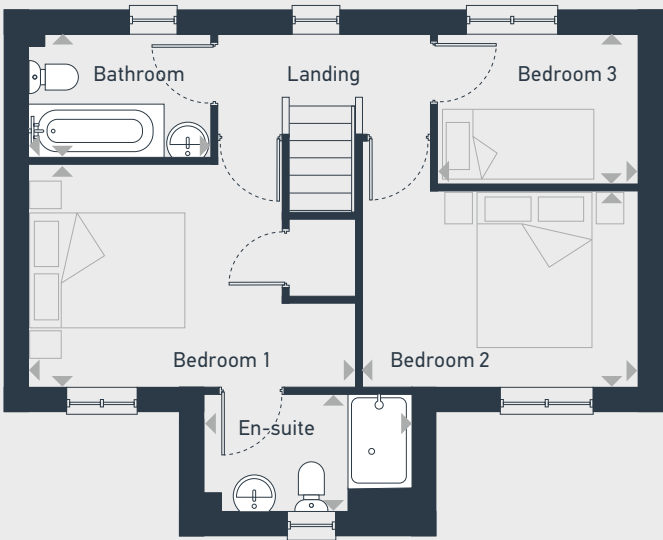
**The Warwick
3 bedroom home**



79.65 sq m / 857 sq ft



GROUND FLOOR



FIRST FLOOR

DIMENSIONS	m	ft
Kitchen/Dining	4.14m x 3.59m	13'7" x 11'9"
Lounge	4.55m x 3.62m	14'11" x 11'11"
WC	1.44m x 1.01m	4'9" x 3'4"

DIMENSIONS	m	ft
Bedroom 1	4.19m x 2.87m	13'9" x 9'5"
Bedroom 2	3.57m x 2.54m	11'9" x 8'4"
Bedroom 3	2.61m x 1.96m	8'7" x 6'5"
Bathroom	2.33m x 1.63m	7'8" x 5'4"
En-suite	2.92m x 1.52m	9'7" x 5'0"



0113 260 0945 | placesforpeople.co.uk/affinity
Affinity, Parkway Close, Leeds, LS14 6TZ

Please note: All layouts and floor plans, configurations, maps and information are intended for guidance only and accuracy of this information cannot be relied upon by prospective purchasers who must make their own enquiries to satisfy themselves by inspection or otherwise as to the correct detail. Sizes and dimensions approximate and subject to change.