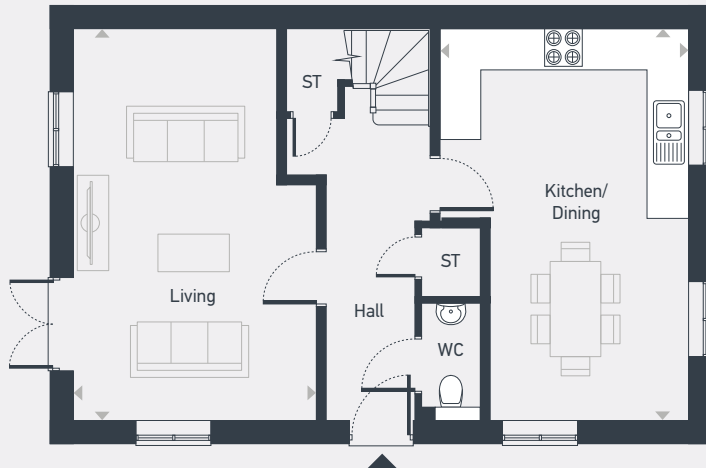




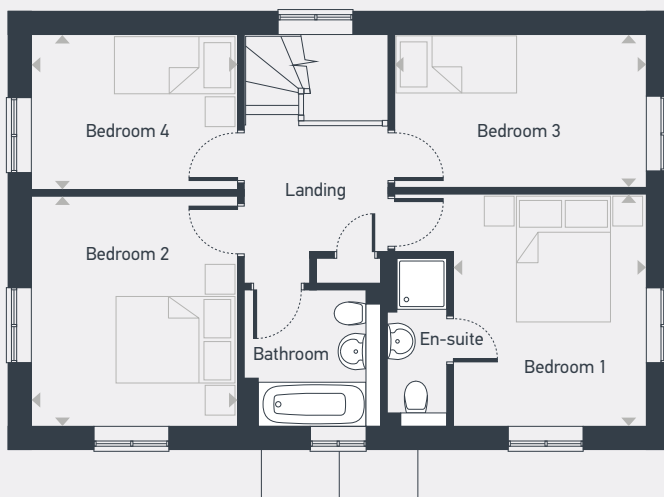
Plots as drawn: 164 and 188

1,283.4 sq. ft

Handed: 163 and 187



GROUND FLOOR



FIRST FLOOR

ST: Store WC: Water Closet

DIMENSIONS	m	ft
Living	6.17m x 3.82m	20'2" x 12'6"
Kitchen/Dining	6.17m x 3.91m	20'2" x 12'10"
Bedroom 1	3.66m x 3.03m	12'0" x 9'11"
Bedroom 2	3.62m x 3.24m	11'10" x 10'7"
Bedroom 3	3.96m x 2.41m	12'11" x 7'10"
Bedroom 4	3.24m x 2.44m	10'7" x 8'0"



01865 575 465 | [placesforpeople.co.uk/meadowbrook](https://placesforpeople.co.uk/meadowbrook)  
High Street, Chalgrove, Oxford OX44 7AF