

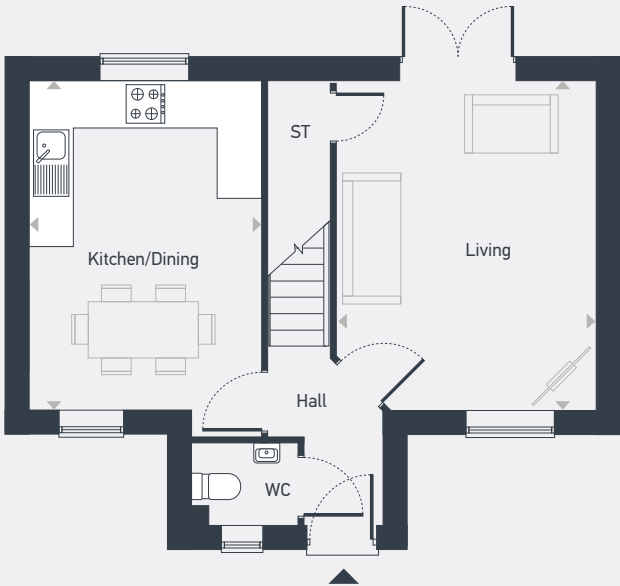
**Sherwin
Gardens**

**The Whitewater
3 bedroom home**

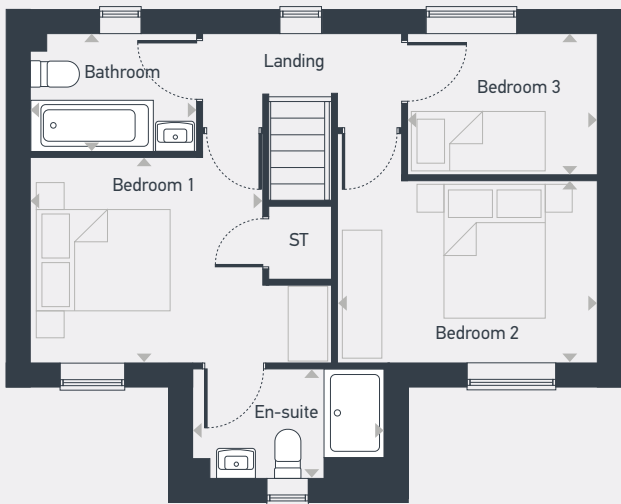


Plot as drawn: 23

78.64 sq.m / 846 sq.ft



GROUND FLOOR



FIRST FLOOR

ST: Store WC: Water Closet

DIMENSIONS	m	ft
Kitchen/Dining	4.52m x 3.20m	14'10" x 10'6"
Living	4.52m x 3.54m	14'10" x 11'7"

DIMENSIONS	m	ft
Bedroom 1	3.20m x 2.83m	10'6" x 9'3"
En-suite	2.61m x 1.48m	8'7" x 4'10"
Bedroom 2	3.54m x 2.50m	11'7" x 8'2"
Bedroom 3	2.58m x 1.93m	8'6" x 6'4"
Bathroom	2.29m x 1.60m	7'6" x 5'3"



centralandnorthsales@placesforpeople.co.uk | placesforpeople.co.uk/sherwin-gardens
Sherwin Gardens, Sidings Lane, Bramcote, Nottingham NG9 3GJ

Please note: All layouts and floor plans, configurations, maps and information are intended for guidance only and accuracy of this information cannot be relied upon by prospective purchasers who must make their own enquiries to satisfy themselves by inspection or otherwise as to the correct detail.