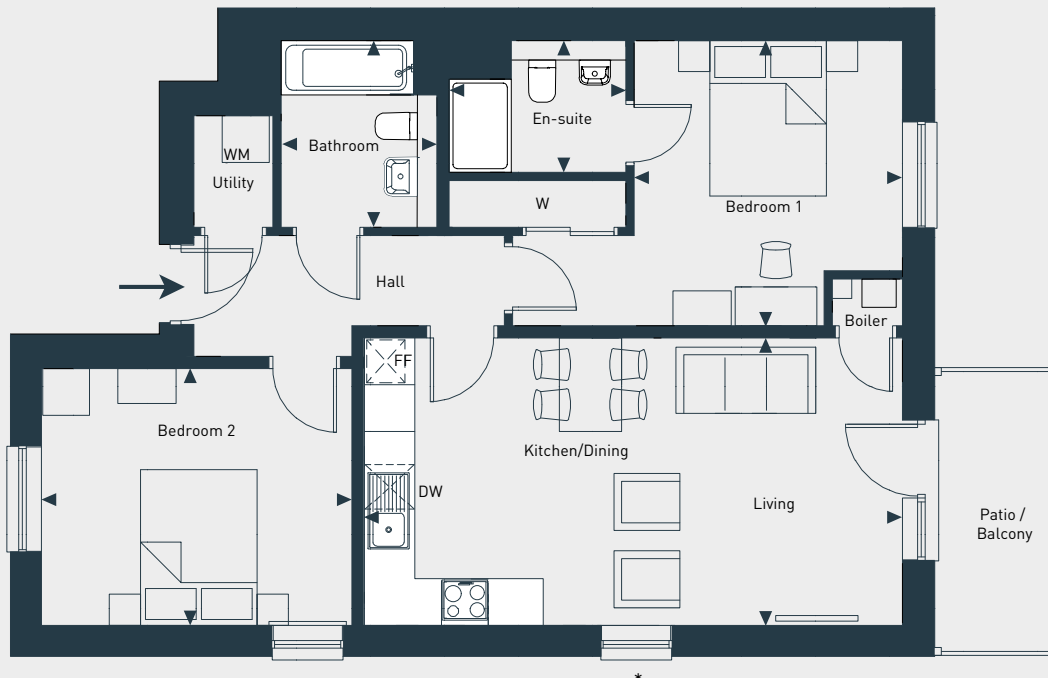
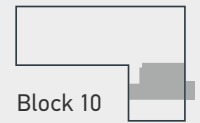


Firth View

Greig 2 bedroom home

Plots 50 - 53

74.2 sq m / 798 sq ft



*Please note that the ground floor (plot 50) does not have a window.

DIMENSIONS	m	ft
Kitchen/ Living/Dining	6.9m x 3.7m	22'8" x 12'2"
Bedroom 1	3.7m x 3.5m	12'2" x 11'6"
Bedroom 2	4.0m x 3.3m	13'2" x 10'10"
Bathroom	2.4m x 2.0m	7'10" x 6'6"
En-suite	2.3m x 1.7m	7'6" x 5'6"



07880458334 | placesforpeople.co.uk/new-homes/find-a-new-home/firth-view

Please note: All layouts and floor plans, configurations, maps and information are intended for guidance only and accuracy of this information cannot be relied upon by prospective purchasers who must make their own enquiries to satisfy themselves by inspection or otherwise as to the correct detail. Sizes and dimensions approximate and subject to change.