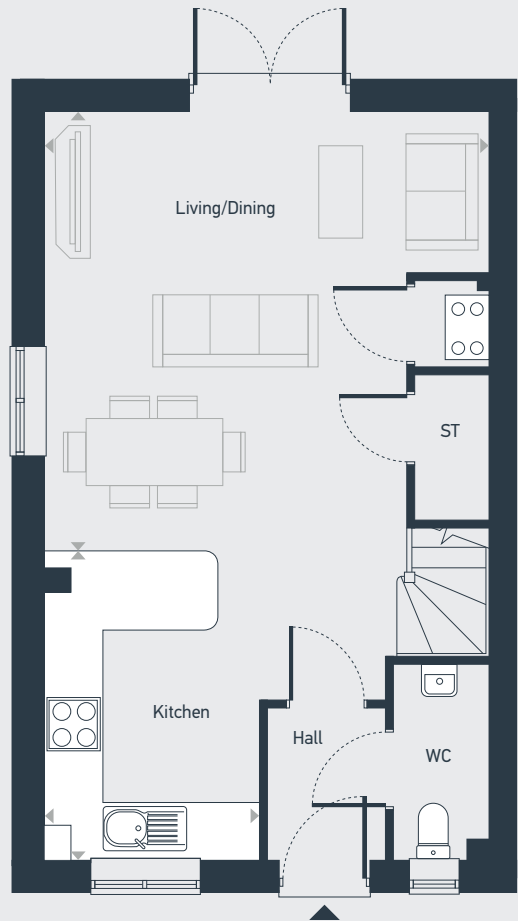


# Greenwood Gardens Lower Herne Village

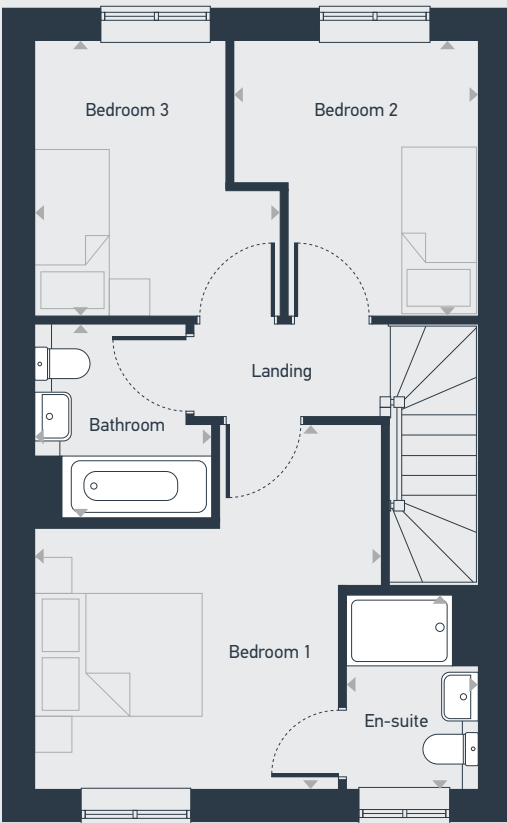
## The Laurel 3 bedroom home

Plots as drawn: 116  
Handed: 117

85.55 sq.m / 921 sq.ft



GROUND FLOOR



FIRST FLOOR

ST: Storage  : MVHR, Mechanical Ventilation Heat Recovery

DIMENSIONS	m	ft
Kitchen	3.50m x 2.43m	11'6" x 8'0"
Living/Dining	5.02m x 4.95m	16'6" x 16'3"

DIMENSIONS	m	ft
Bedroom 1	3.45m x 2.95m	11'4" x 9'8"
En-suite	2.22m x 1.53m	7'2" x 5'1"
Bedroom 2	3.11m x 2.78m	10'3" x 9'1"
Bedroom 3	3.11m x 2.15m	10'3" x 7'1"
Bathroom	2.22m x 2.03m	7'2" x 6'6"



01227 387085 | [greenwoodgardens@placesforpeople.co.uk](mailto:greenwoodgardens@placesforpeople.co.uk) | [placesforpeople.co.uk/greenwoodgardens](https://placesforpeople.co.uk/greenwoodgardens)  
Furrows Drive, Lower Herne CT6 7FH

**Please note:** All layouts and floor plans, configurations, maps and information are intended for guidance only and accuracy of this information cannot be relied upon by prospective purchasers who must make their own enquiries to satisfy themselves by inspection or otherwise as to the correct detail.