

Ashdown Gardens

The Ashdown 2 bedroom house



Artist's Impression

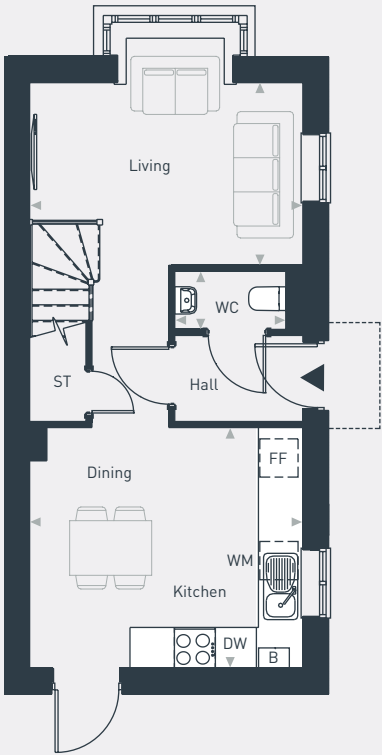
Ashdown Gardens



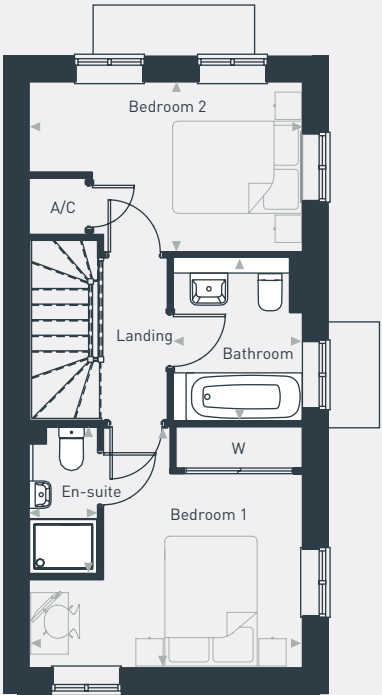
The Ashdown 2 bedroom house

Plots as drawn: 49 and 73
Handed: 61 and 72

69.55 sq.m /749 sq.ft



GROUND FLOOR



FIRST FLOOR

FF: Fridge/Freezer ST: Store DW: Dishwasher WM: Washing Machine WC: Water Closet B: Boiler A/C: Airing Cupboard

DIMENSIONS	m	ft
Kitchen/Dining	3.99m x 3.52m	13'1" x 11'6"
Living	3.99m x 2.67m	13'1" x 8'9"
WC	1.62m x 0.85m	5'5" x 2'9"

DIMENSIONS	m	ft
Bedroom 1	3.99m x 3.52m	13'1" x 11'6"
En-suite	1.00m x 2.21m	3'3" x 7'3"
Bedroom 2	3.99m x 2.48m	13'1" x 8'1"
Bathroom	1.95m x 2.38m	6'4" x 7'9"



01793 205 027 | placesforpeople.co.uk/ashdown-gardens
Marlborough Park, Pipers Way, Old Town, Swindon

Please note: All layouts and floor plans, configurations, maps and information are intended for guidance only and accuracy of this information cannot be relied upon by prospective purchasers who must make their own enquiries to satisfy themselves by inspection or otherwise as to the correct detail. The artist's impression is intended as a guide only and that actual finishes may vary. For more details, please speak to your sales advisor.