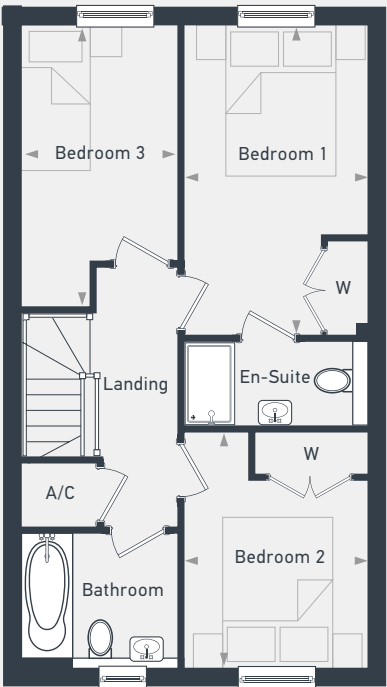


Plots 86, 87 - semi-detached
Plot 87 - handed

95.6 sq m / 1030 sq ft



GROUND FLOOR



FIRST FLOOR

DIMENSIONS	m	
Kitchen / Dining Room	5.09m x 4.06m	16'6" x 13'3"
Living Room	5.17m x 2.74m	16'9" x 8'9"

DIMENSIONS	m	
Bedroom 1	4.49m x 2.71m	14'7" x 8'8"
Bedroom 2	3.43m x 2.71m	11'2" x 8'8"
Bedroom 3	4.06m x 2.62m	13'3" x 8'6"



02380 987 604 | placesforpeople.co.uk/netley-grange
Netley Grange, Grange Road, Netley, Southampton, SO31 5FH

Please note: All layouts and floor plans, configurations, maps and information are intended for guidance only and accuracy of this information cannot be relied upon by prospective purchasers who must make their own enquiries to satisfy themselves by inspection or otherwise as to the correct detail. Sizes and dimensions approximate and subject to change.