

Firth View

Selkirk 2 bedroom home

Block 9

Plots 23, 24, 25, 26*, 27*, 28*, 29, 30, 31, 32* & 33*

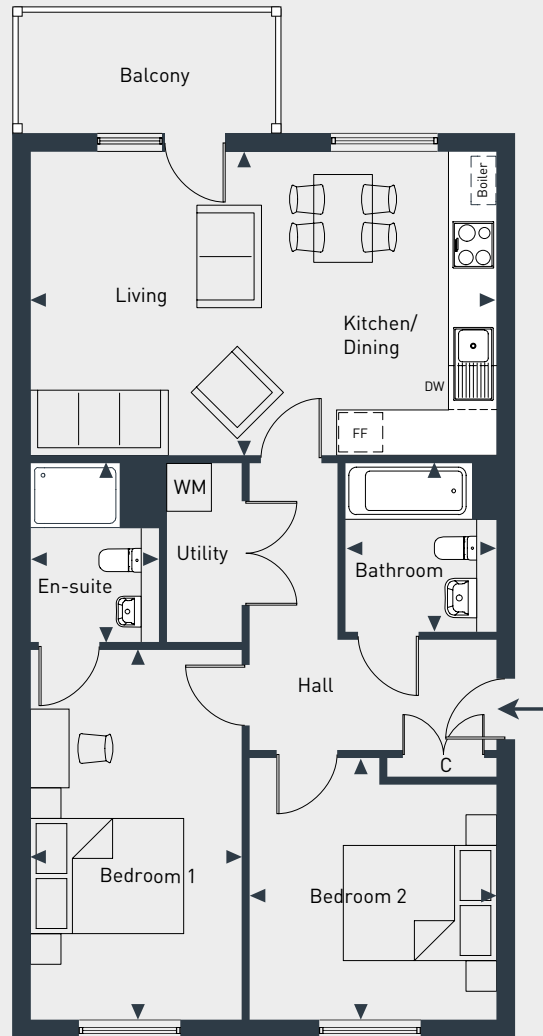
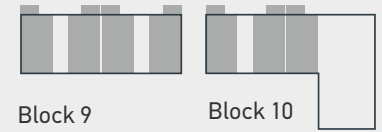
* Plots 26, 27, 28, 32 & 33 are handed to the plan drawn

Block 10

Plots 34, 35, 36, 37, 38*, 39*, 40*, 41*, 42, 43, 44 & 45

* Plots 38, 39, 40 & 41 are handed to the plan drawn

70 sq m / 753 sq ft



DIMENSIONS	m	ft
Kitchen/Living/Dining	6.1m x 3.9m	20' x 12'10"
Bedroom 1	4.9m x 2.7m	6'1" x 8'11"
Bedroom 2	3.5m x 3.2m	11'6" x 10'6"
Bathroom	2.2m x 2.0m	7'2" x 6'6"
Ensuite	2.3m x 1.7m	7'6" x 5'6"



07880458334 | placesforpeople.co.uk/new-homes/find-a-new-home/firth-view

Please note: All layouts and floor plans, configurations, maps and information are intended for guidance only and accuracy of this information cannot be relied upon by prospective purchasers who must make their own enquiries to satisfy themselves by inspection or otherwise as to the correct detail. Sizes and dimensions approximate and subject to change.