

Lloyd Park at Port Loop



The Rutland C 2 Bedroom Apartment



Lloyd Park at Port Loop



The Rutland C 2 Bedroom Apartment

Plots as drawn

*Handed to the plan drawn

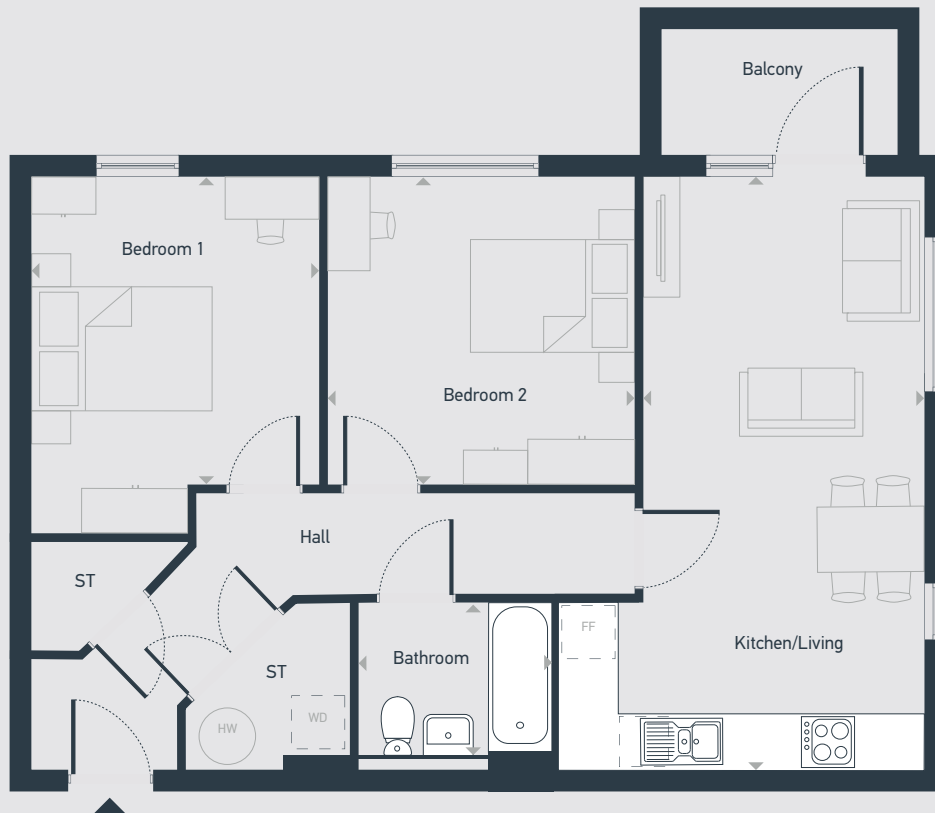
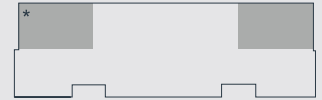
Floor 0: 72*, 77

Floor 1: 80*, 85

Floor 2: 88*, 93

Floor 3: 96*, 101

70.4 sq.m / 758.0 sq.ft



ST: Store WD: Washer Dryer FF: Integrated Fridge Freezer HW: Hot Water Cylinder

DIMENSIONS	m		ft	
Kitchen/Living	6.85m	x 3.26m	22'6"	x 10'8"
Bedroom 1	3.60m	x 3.29m	11'0"	x 10'10"
Bedroom 2	3.60m	x 3.52m	11'10"	x 11'7"
Bathroom	2.15m	x 1.99m	7'1"	x 6'6"



centralandnorthsales@placesforpeople.co.uk | placesforpeople.co.uk/lloyd-park
Freeth Street, Port Loop, B16 0FD

Please note: All layouts and floor plans, configurations, maps and information are intended for guidance only and accuracy of this information cannot be relied upon by prospective purchasers who must make their own enquiries to satisfy themselves by inspection or otherwise as to the correct detail. The artist's impression is intended as a guide only and that actual finishes may vary. For more details, please speak to your sales advisor.