

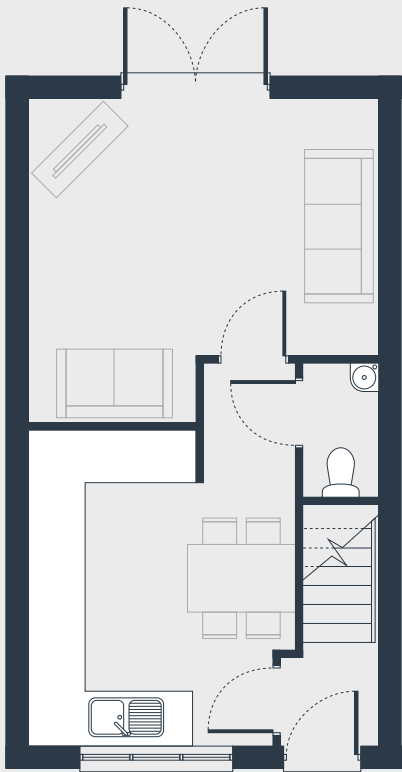
Marble Square

The Laurel 3 bedroom house

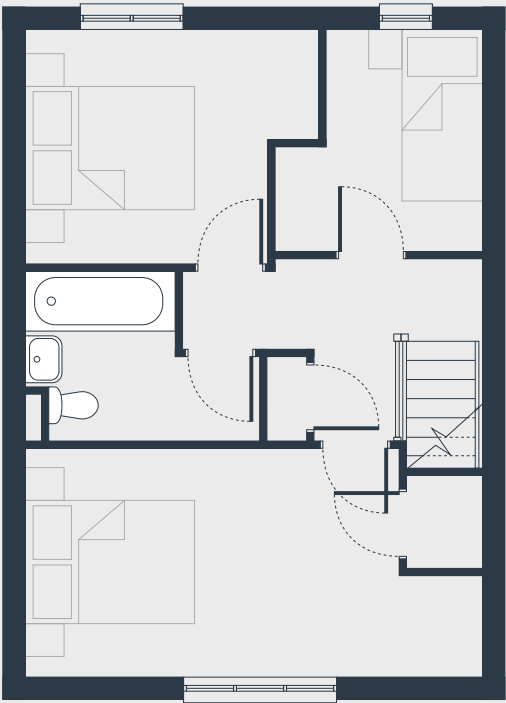


Plots as drawn: 17 and 24
Plots handed: 25

69.86 sq.m / 752 sq.ft



GROUND FLOOR



FIRST FLOOR

ST: Storage WC: Water Closet

DIMENSIONS	m	ft
Living	3.99m x 3.72m	13'1" x 12'2"
Kitchen/Dining	3.63m x 3.03m	11'11" x 9'11"

DIMENSIONS	m	ft
Bedroom 1	5.25m x 2.64m	17'3" x 8'8"
Bedroom 2	3.37m x 2.64m	11'1" x 8'8"
Bedroom 3	2.49m x 2.39m	8'2" x 7'10"
Bathroom	2.68m x 1.97m	8'9" x 6'6"