

# Darwin Manor

# The Harding 1 Bedroom home



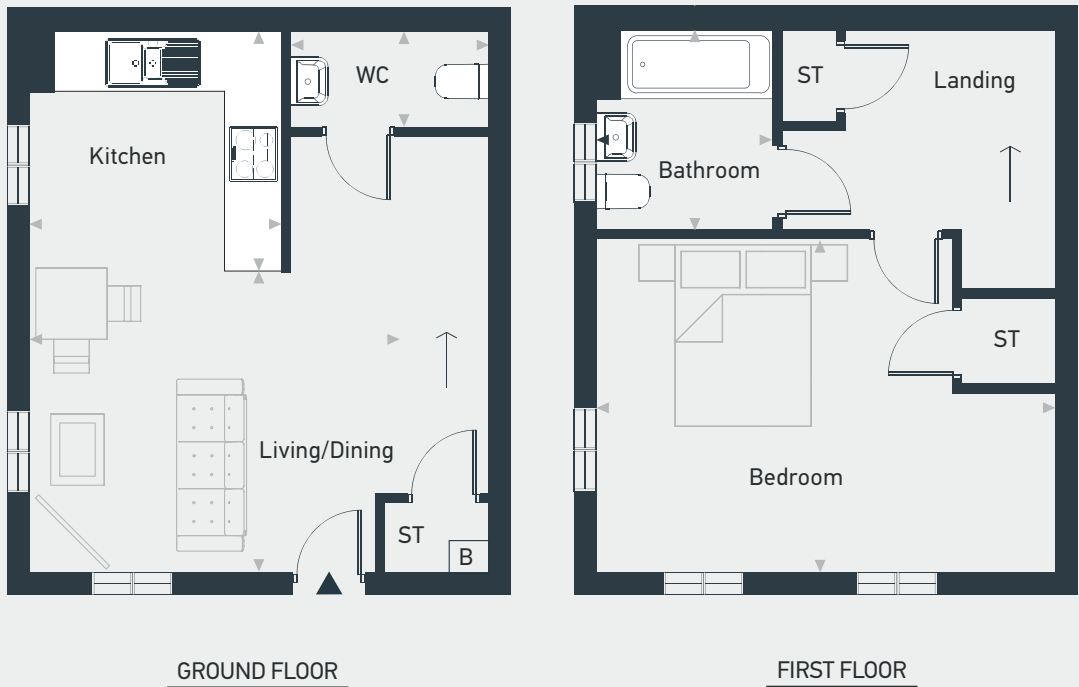
# Darwin Manor



## The Harding 1 Bedroom home

Plot as drawn: 50  
Plot handed: 51

58 sq m / 628 sq ft



ST: Store WC: Water Closet

DIMENSIONS	m	ft
Living/Dining	3.76m x 3.29m	12' 4" x 10'10"
Kitchen	2.70m x 2.58m	8' 10" x 8'6"
WC	2.17m x 1.00m	7' 2" x 3' 3"

DIMENSIONS	m	ft
Bedroom 1	4.97m max x 3.62m max	16' 4" max x 11'11" max
Bathroom	2.15m x 1.92m	7' 1" x 6' 4"



[placesforpeople.co.uk/darwin-manor](https://placesforpeople.co.uk/darwin-manor)  
62 Bowes Road Derby, DE24 5BZT

**Please note:** All layouts and floor plans, configurations, maps and information are intended for guidance only and accuracy of this information cannot be relied upon by prospective purchasers who must make their own enquiries to satisfy themselves by inspection or otherwise as to the correct detail.





# Darwin Manor

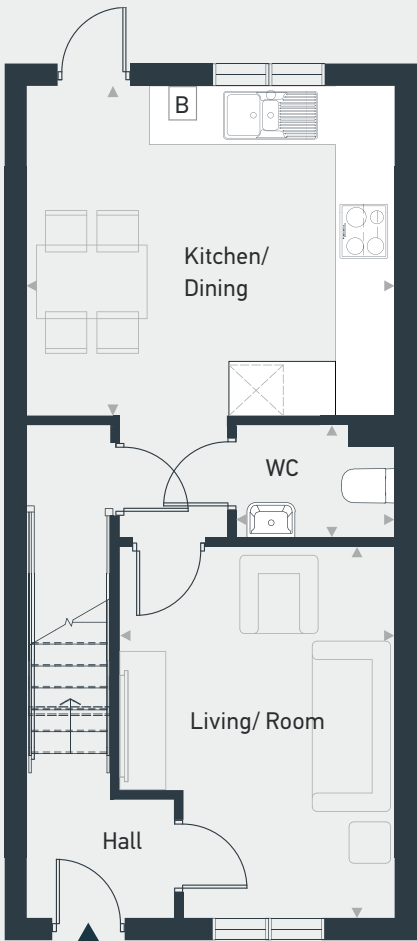


## The Shermont 2 Bedroom home

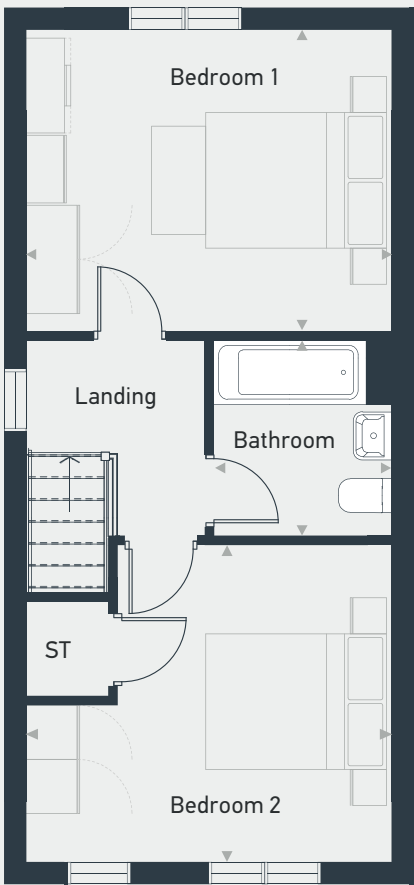
Plots as drawn: 47, 48, 49, 53, 71, 77, 79, 80, 82, 96, 127, 128, 150, 152, 153, 164, 166, 167, 181, 187, 189, 197, 199 & 201

72 sq m / 775 sq ft

Plots handed: 46, 54, 70, 78, 81, 86, 129, 151, 154, 163, 165, 180, 186, 198, 200, 205, 206, 208 & 209



GROUND FLOOR



FIRST FLOOR

ST: Store WC: Water Closet B: Boiler

\* Plots 129 & 154 include a window to the hall and a window to the kitchen dining room  
\* Selected plots will include a bathroom window - please see sales agent for specific plans

DIMENSIONS	m	ft
Kitchen/Dining	3.96m x 3.58m	13' 0" x 11' 9"
Living	4.07m max x 2.98m max	13' 4" max x 9' 9" max
WC	1.70m x 1.23m	5' 7" x 4' 0"

DIMENSIONS	m	ft
Bedroom 1	3.96m x 3.27m	13' 0" x 10' 9"
Bedroom 2	3.96m max x 3.45m max	13' 0" max x 11' 4" max
Bathroom	2.15m x 1.92m	7' 1" x 6' 4"



[placesforpeople.co.uk/darwin-manor](https://placesforpeople.co.uk/darwin-manor)  
62 Bowes Road Derby, DE24 5BZT

**Please note:** All layouts and floor plans, configurations, maps and information are intended for guidance only and accuracy of this information cannot be relied upon by prospective purchasers who must make their own enquiries to satisfy themselves by inspection or otherwise as to the correct detail.



# Darwin Manor

# The Derwent 3 bedroom home



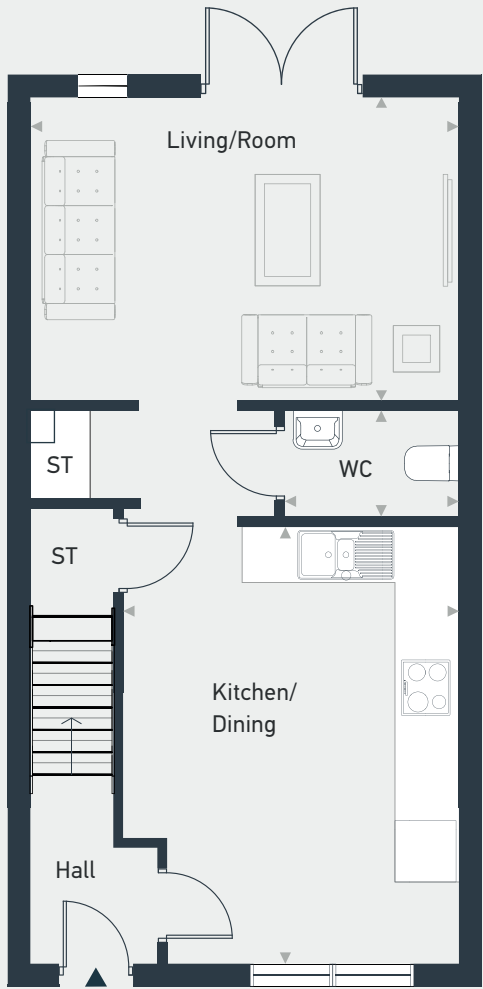
# Darwin Manor



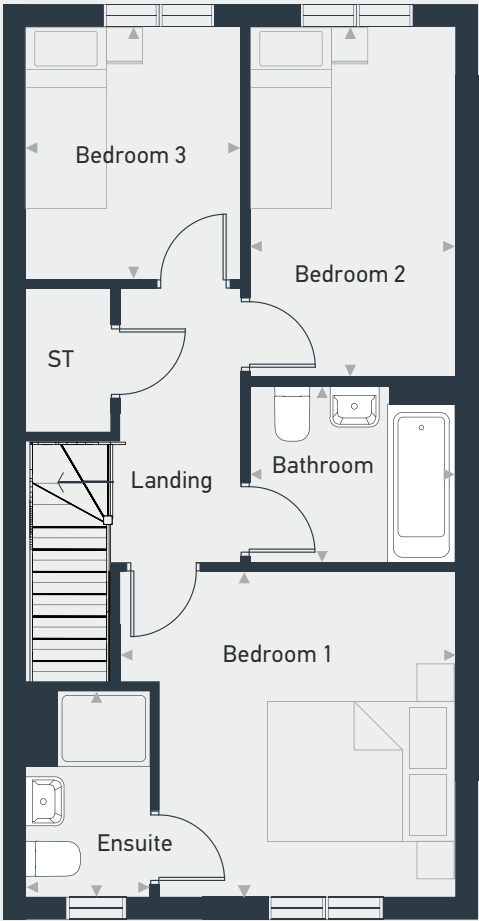
## The Derwent 3 bedroom home

Plots as drawn: 55, 57, 94, 98, 144, 179, 183, 185, 193, 195 & 203  
Plots handed: 56, 95, 99, 145, 178, 182, 184, 190, 192, 194 & 202

84 sq m / 907 sq ft



GROUND FLOOR



FIRST FLOOR

ST: Store WC: Water Close

\* Selected plots will have a window at the top of stairs depending on orientation  
\* Selected plots will have a bathroom window depending on orientation

DIMENSIONS	m	ft
Kitchen/Dining	4.68m max x 3.58m max	15' 4" max x 11' 9" max
Living	4.53m x 3.28m	14' 10" x 10' 9"
WC	1.85m x 1.14m	6' 1" x 3' 9"

DIMENSIONS	m	ft
Bedroom 1	4.53m max x 2.71m max	14' 0" max x 8' 11" max
Bedroom 2	3.71m x 2.15m	12' 2" x 7' 1"
Bedroom 3	2.69m x 2.28m	8' 10" x 7' 6"
Ensuite	2.10m x 1.03m	6' 10" x 3' 4"
Bathroom	2.67m x 1.92m	8' 9" x 6' 4"



[placesforpeople.co.uk/darwin-manor](https://placesforpeople.co.uk/darwin-manor)  
62 Bowes Road Derby, DE24 5BZT

Please note: All layouts and floor plans, configurations, maps and information are intended for guidance only and accuracy of this information cannot be relied upon by prospective purchasers who must make their own enquiries to satisfy themselves by inspection or otherwise as to the correct detail.







# Darwin Manor



## The Hardwick 3 bedroom home

Plots as drawn: 73, 74, 89, 112, 113,124 ,125, 130, 131, 136, 146, 147 & 148  
Plots handed: 75, 88, 114, 126, 132 & 149

84 sq m / 904 sq ft



\*End properties will include either a bathroom window or landing window depending on orientation

DIMENSIONS	m	ft
Kitchen/Dining	4.34m x 3.35m	14' 3" x 11' 0"
Living	4.85m max x 3.58m max	15' 11" max x 11' 9" max
Utility	2.59m x 1.08m	8' 6" x 3' 7"
WC	1.65m x 1.08m	5' 5" x 3' 7"

DIMENSIONS	m	ft
Bedroom 1	4.53m max x 2.71m max	14' 10" max x 8' 11" max
Bedroom 2	3.71m x 2.15m	12' 2" x 7' 1"
Bedroom 3	2.69m x 2.28m	8' 10" x 7' 6"
Bathroom	2.67m max x 1.92m max	8' 9" max x 6' 4" max
Ensuite	2.14m x 1.06m	7' 0" x 3' 5"



[placesforpeople.co.uk/darwin-manor](https://placesforpeople.co.uk/darwin-manor)  
62 Bowes Road Derby, DE24 5BZT

**Please note:** All layouts and floor plans, configurations, maps and information are intended for guidance only and accuracy of this information cannot be relied upon by prospective purchasers who must make their own enquiries to satisfy themselves by inspection or otherwise as to the correct detail.



# Darwin Manor

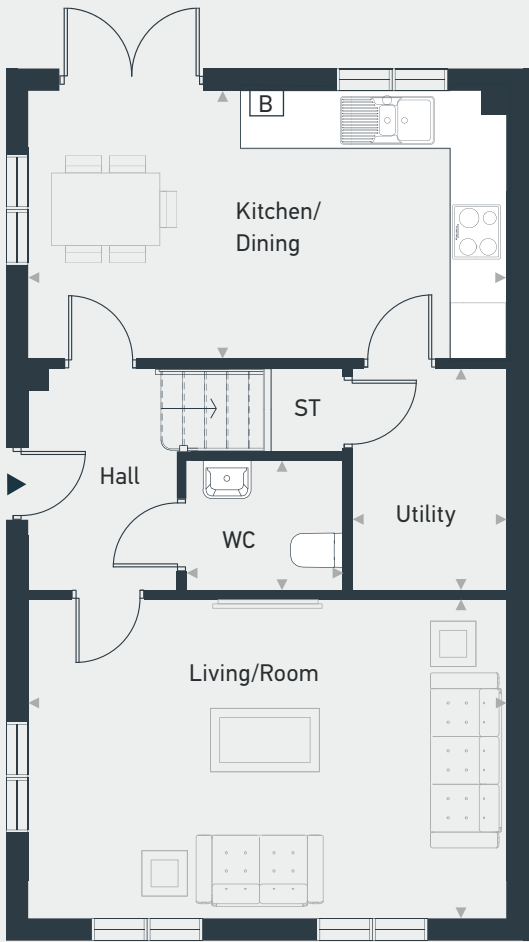


## The Elvaston 3 bedroom home

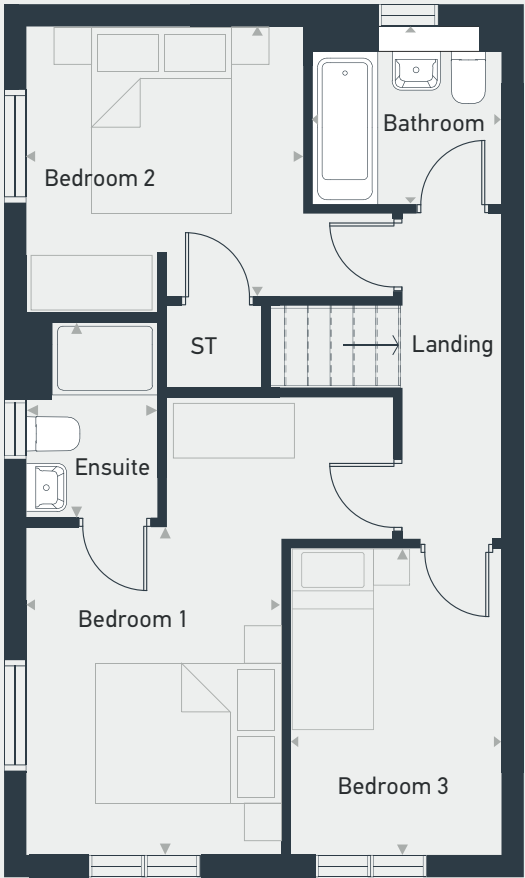
Plots as drawn: 65, 69, 83, 87, 89, 133, 204 & 207

95 sq m / 1017 sq ft

Plots handed: 52, 72, 76, 97, 177, 188 & 196



GROUND FLOOR



FIRST FLOOR

ST: Store WC: Water Closet B: Boiler

DIMENSIONS	m	ft
Kitchen/Dining	5.20m x 2.94m	17' 1" x 9' 8"
Living	5.20m x 3.49m	17' 1" x 11' 5"
Utility	2.44m x 1.65m	8' 0" x 5' 5"
WC	1.75m x 1.44m	5' 9" x 4' 9"

DIMENSIONS	m	ft
Bedroom 1	3.59m x 2.77m	11'10" x 9' 1"
Bedroom 2	3.12m x 3.06m	10'3" x 10' 0"
Bedroom 3	3.34m x 2.34m	11'0" x 7' 8"
Bathroom	2.05m x 1.70m max	6'9" x 5' 7" max
Ensuite	2.15m x 1.18m max	7' 1" x 3'10" max



[placesforpeople.co.uk/darwin-manor](https://placesforpeople.co.uk/darwin-manor)  
62 Bowes Road Derby, DE24 5BZT

**Please note:** All layouts and floor plans, configurations, maps and information are intended for guidance only and accuracy of this information cannot be relied upon by prospective purchasers who must make their own enquiries to satisfy themselves by inspection or otherwise as to the correct detail.





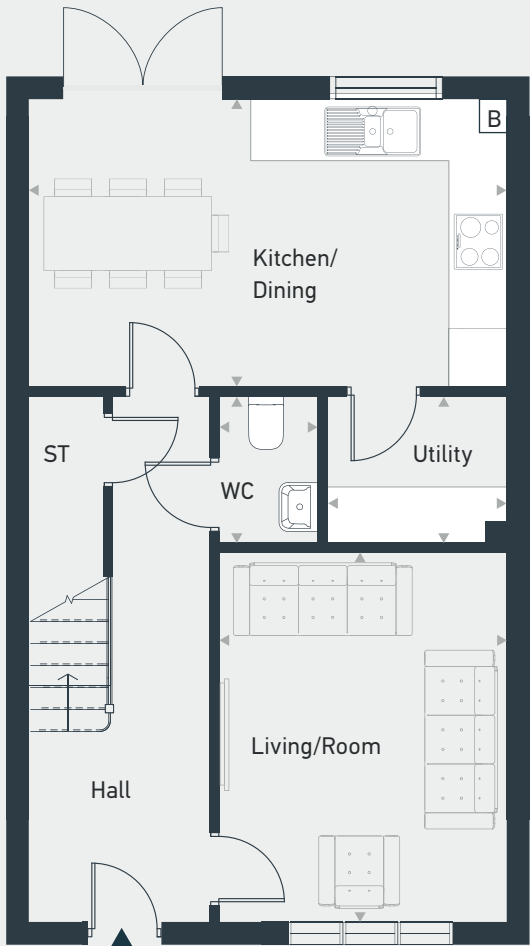
# Darwin Manor



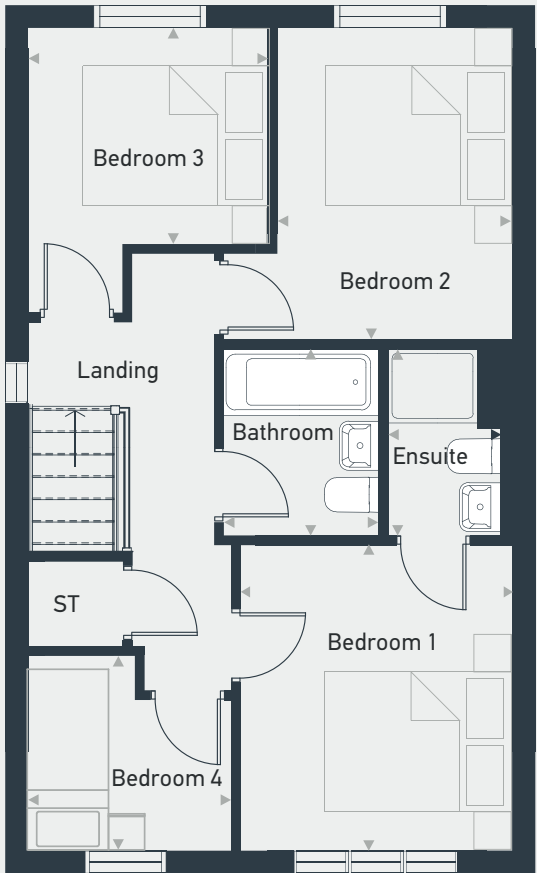
# The Atwood 4 bedroom home

Plots 66, 134, 135

91 sq m / 978 sq ft



GROUND FLOOR



FIRST FLOOR

ST: Store WC: Water Closet B: Boiler

DIMENSIONS	m	ft
Kitchen/Dining	5.13m x 3.06m	16' 10" x 10' 0"
Living	4.02m x 3.08m	13' 2" x 10' 1"
Utility	1.94m x 1.53m	6' 4" x 5' 0"
WC	1.52m x 1.05m	5' 0" x 3' 5"

DIMENSIONS	m	ft
Bedroom 1	3.29m x 2.89m	10' 9" x 9' 6"
Bedroom 2	3.37m x 2.52m	11' 1" x 8' 3"
Bedroom 3	2.52m x 2.35m	8' 3" x 7' 9"
Bedroom 4	2.15m max x 2.06m max	7' 1" max x 6' 9" max
Bathroom	1.99m x 1.70m	6' 7" x 5' 7"
Ensuite	1.99m max x 1.21m max	6' 7" max x 4' 0" max



placesforpeople.co.uk/darwin-manor  
62 Bowes Road Derby, DE24 5BZT

Please note: All layouts and floor plans, configurations, maps and information are intended for guidance only and accuracy of this information cannot be relied upon by prospective purchasers who must make their own enquiries to satisfy themselves by inspection or otherwise as to the correct detail.