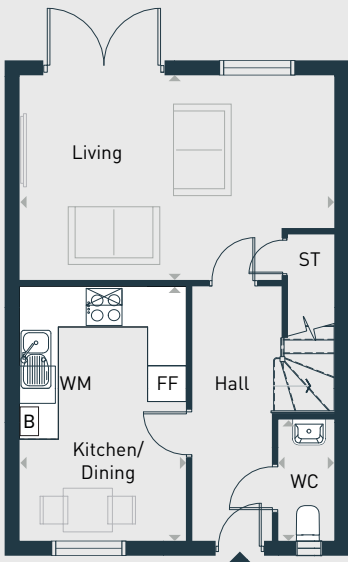


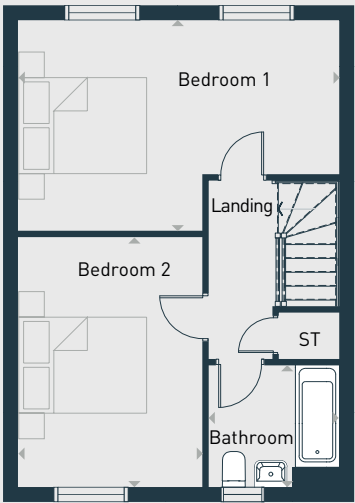


Plots as drawn: 69
Handed: 68

79.42 sq.m / 855 sq.ft



GROUND FLOOR



FIRST FLOOR

FF: Fridge/Freezer ST: Store WM: Washing Machine WC: Water Closet B: Boiler

DIMENSIONS	m	ft
Living/Dining	5.28m x 3.40m	17' 3" x 11' 1"
Kitchen	4.18m x 2.77m	13' 7" x 9' 0"
W.C	1.98m x 1.03m	6' 6" x 3' 3"

DIMENSIONS	m	ft
Bedroom 1	5.28m max x 2.54m max	17' 3" x 8' 3"
Bedroom 2	4.11m x 3.02m	13' 4" x 9' 9"
Bathroom	2.19m x 1.99m	7' 1" x 6' 5"



07971 362 256 | placesforpeople.co.uk/goldsmiths-green
Gipsy Lane, Kettering, Northamptonshire, NN16 8UB

Please note: All layouts and floor plans, configurations, maps and information are intended for guidance only and accuracy of this information cannot be relied upon by prospective purchasers who must make their own enquiries to satisfy themselves by inspection or otherwise as to the correct detail. The artist's impression is intended as a guide only and that actual finishes may vary. For more details, please speak to your sales advisor.