

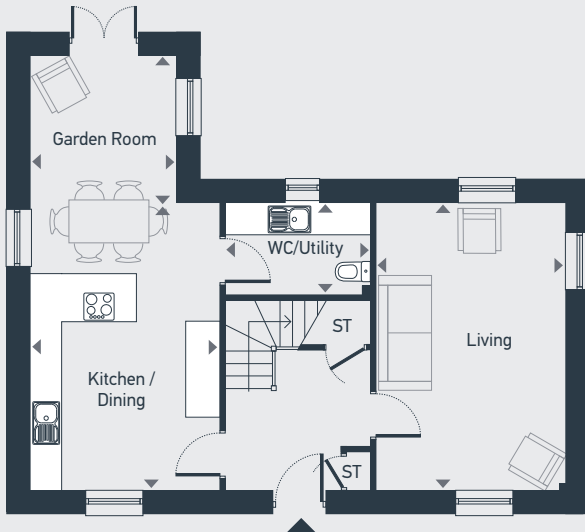


# Chapelton

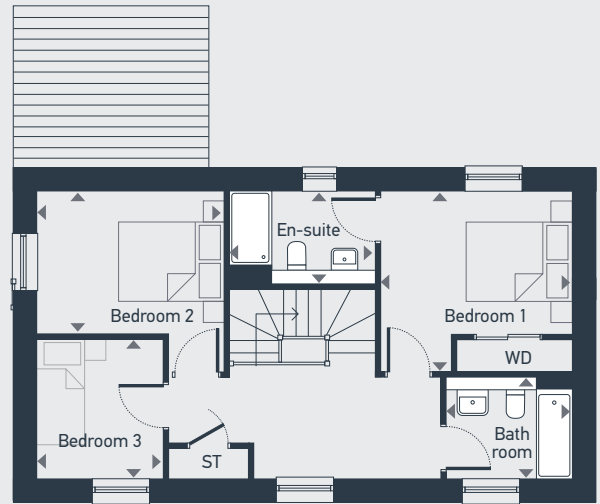
## Baird 3 bedroom home

Plots as drawn: 98, 102, 110, 115  
Plots handed: 105, 109, 114

118.77 sq m / 1278.43 sq ft



GROUND FLOOR



FIRST FLOOR

DIMENSIONS	m	ft
Living	3.60m x 5.48m	11'11" x 17'12"
Kitchen / Dining	3.54m x 5.48m	11'9" x 17'12"
Garden Room	2.79m x 2.80m	9'1" x 9'2"
WC/Utility	2.74m x 1.75m	9'0" x 5'9"

	m	ft
Bedroom 1	3.63m x 3.42m	11'11" x 11'3"
En-suite	2.74m x 1.75m	9'0" x 5'9"
Bedroom 2	3.55m x 2.73m	11'8" x 8'11"
Bedroom 3	2.40m x 2.65m	7'10" x 8'8"
Bathroom	2.40m x 1.95m	7'10" x 6'5"



**Please note:** All layouts and floor plans, configurations, maps and information are intended for guidance only and accuracy of this information cannot be relied upon by prospective purchasers who must make their own enquiries to satisfy themselves by inspection or otherwise as to the correct detail.