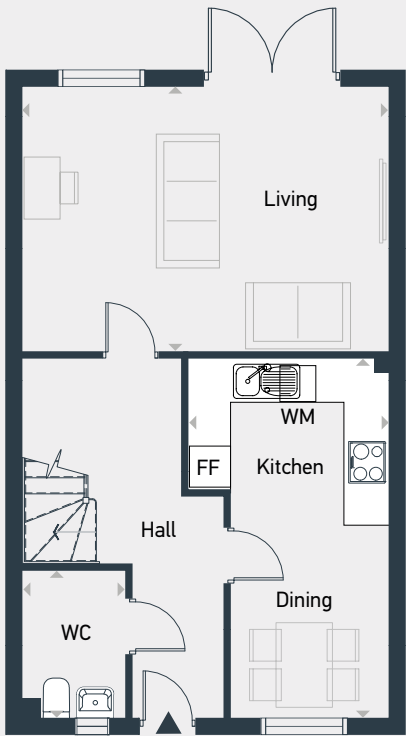




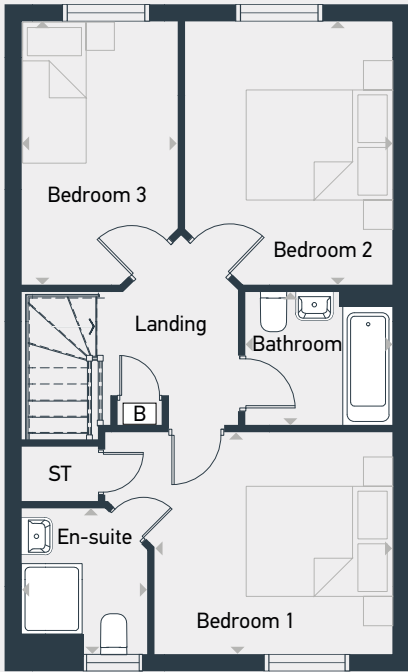


Plots as drawn: 6 and 74
Handed: 7 and 73

92.8 sq.m / 1000 sq.ft



GROUND FLOOR



FIRST FLOOR

FF: Fridge/Freezer ST: Store WM: Washing Machine WC: Water Closet B: Boiler

DIMENSIONS	m	ft
Living	5.23m x 3.73m	17'2" x 12'3"
Kitchen/Dining	5.05m x 2.90m	16'7" x 9'6"
WC	2.00m x 1.46m	6'7" x 4'10"

DIMENSIONS	m	ft
Bedroom 1	4.13m x 3.11m	13'7" x 10'3"
En-suite	2.01m x 1.71m	6'7" x 5'7"
Bedroom 2	3.63m x 2.97m	11'11" x 9'9"
Bedroom 3	3.71m x 2.16m	12'2" x 7'1"
Bathroom	2.14m x 1.96m	7'0" x 6'5"



07971 362 256 | placesforpeople.co.uk/goldsmiths-green
Gipsy Lane, Kettering, Northamptonshire, NN16 8UB

Please note: All layouts and floor plans, configurations, maps and information are intended for guidance only and accuracy of this information cannot be relied upon by prospective purchasers who must make their own enquiries to satisfy themselves by inspection or otherwise as to the correct detail.