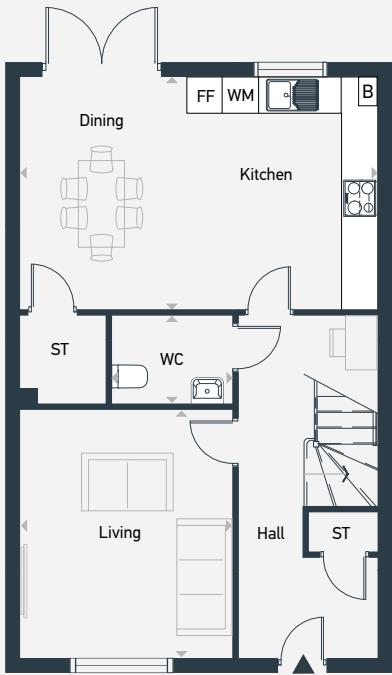




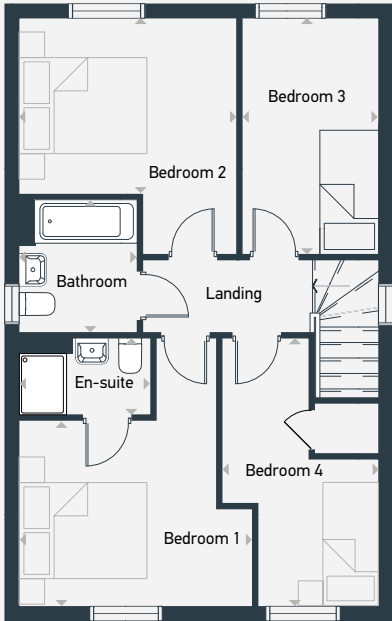


Plots as drawn: 56, 65, 72 and 99  
Handed: 55, 64, 66, 79 and 90

110.32 sq.m / 1187 sq.ft



GROUND FLOOR



FIRST FLOOR

FF: Fridge/Freezer ST: Store WM: Washing Machine WC: Water Closet B: Boiler

DIMENSIONS	m	ft
Kitchen/Dining	5.77m x 3.77m	18'11" x 12'5"
Living	4.10m x 3.43m	13'6" x 11'3"
WC	1.95m x 1.45m	6'5" x 4'9"

DIMENSIONS	m	ft
Bedroom 1	4.38m x 3.77m	14'5" x 12'5"
En-suite	2.10m x 1.28m	6'11" x 4'3"
Bedroom 2	3.83m x 3.51m	12'7" x 11'6"
Bedroom 3	3.81m x 2.15m	12'6" x 7'1"
Bedroom 4	4.38m x 2.49m	16'2" x 8'2"
Bathroom	2.15m x 1.90m	7'1" x 6'3"



07971 362 256 | [placesforpeople.co.uk/goldsmiths-green](https://placesforpeople.co.uk/goldsmiths-green)  
Gipsy Lane, Kettering, Northamptonshire, NN16 8UB