

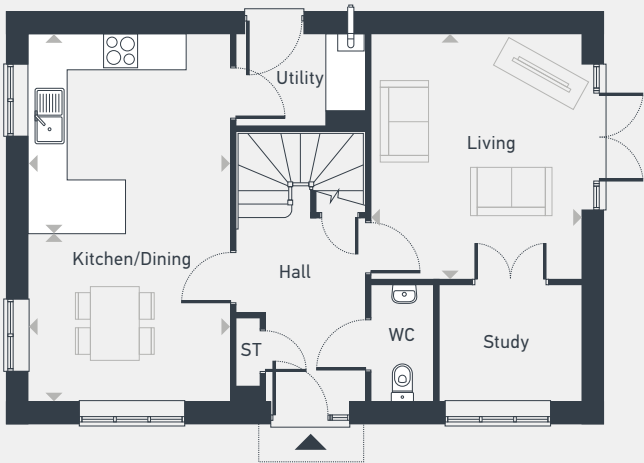


Carvers Meadow

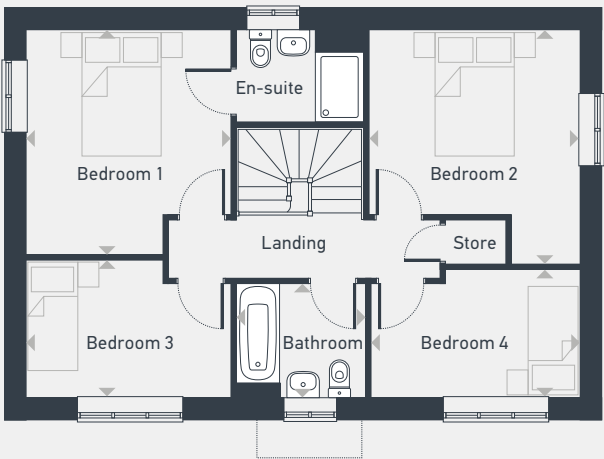
The Caston-C 4 bedroom house

Plots 1, 4 & 53 — detached
Plot 1 — handed

119 sq m / 1,284 sq ft



GROUND FLOOR



FIRST FLOOR

DIMENSIONS	m	ft
Kitchen/Dining	6.26m x 3.39m	20'6" x 11'1"
Living Room	4.17m x 3.54m	13'8" x 11'7"

DIMENSIONS	m	ft
Bedroom 1	3.46m x 3.14m	11'4" x 10'3"
En-suite	2.15m x 1.56m	7'0" x 5'1"
Bedroom 2	3.75m x 3.58m	12'3" x 11'9"
Bedroom 3	3.46m x 2.34m	11'4" x 7'8"
Bedroom 4	3.55m x 3.17m	11'7" x 10'4"
Bathroom	2.19m x 1.95m	7'2" x 6'4"



01953 445 640 | sales@carversmeadow.co.uk | placesforpeople.co.uk/carversmeadow
Carvers Meadow, Carvers Lane, Attleborough, Norfolk NR17 1AB

Information correct as of May 2024

Please note: All CGIs, layouts and floor plans, configurations, maps and information are intended for guidance only and accuracy of this information cannot be relied upon by prospective purchasers who must make their own enquiries to satisfy themselves by inspection or otherwise as to the correct detail. Sizes and dimensions approximate and subject to change.