

# Woodland Edge

## The Weaver 3 bedroom home

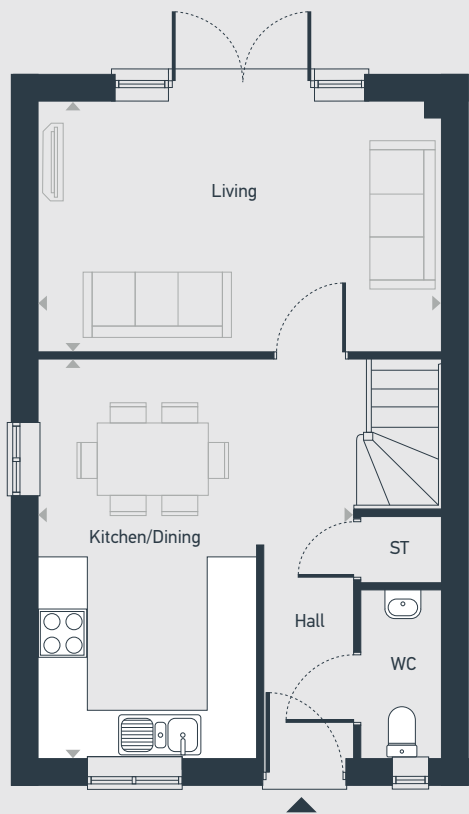


# Woodland Edge

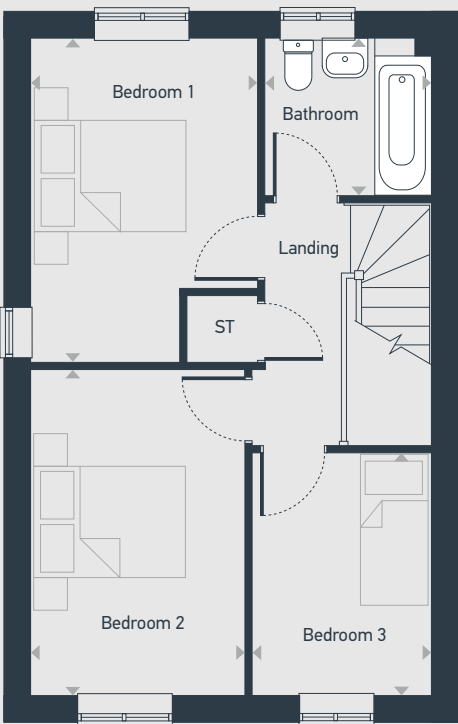
## The Weaver 3 bedroom home

Plot as drawn: 12, 38, 40, 75, 81, 83 and 89  
Handed: 11, 39, 43, 50, 57, 74, 80, 82 and 88

78.97 sq.m / 850 sq.ft



GROUND FLOOR



FIRST FLOOR

ST: Store WC: Water Closet

DIMENSIONS	m	ft
Living	4.93m x 3.09m	16'2" x 10'1"
Kitchen/Dining	4.90m x 3.86m	16'1" x 12'7"

DIMENSIONS	m	ft
Bedroom 1	3.98m x 2.80m	13'1" x 9'2"
Bedroom 2	4.01m x 2.65m	13'2" x 8'7"
Bedroom 3	3.00m x 2.22m	9'8" x 7'3"
Bathroom	2.06m x 1.94m	6'8" x 6'4"



01274 531233 | [centralandnorthsales@placesforpeople.co.uk](mailto:centralandnorthsales@placesforpeople.co.uk) | [placesforpeople.co.uk/woodland-edge](https://placesforpeople.co.uk/woodland-edge)  
Bierley Lane, Bradford BD4 6DU

**Please note:** All layouts and floor plans, configurations, maps and information are intended for guidance only and accuracy of this information cannot be relied upon by prospective purchasers who must make their own enquiries to satisfy themselves by inspection or otherwise as to the correct detail. April 2025 06015-05.