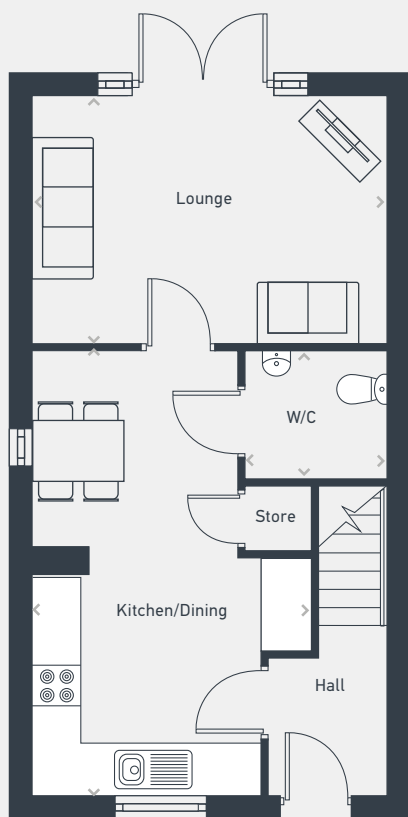


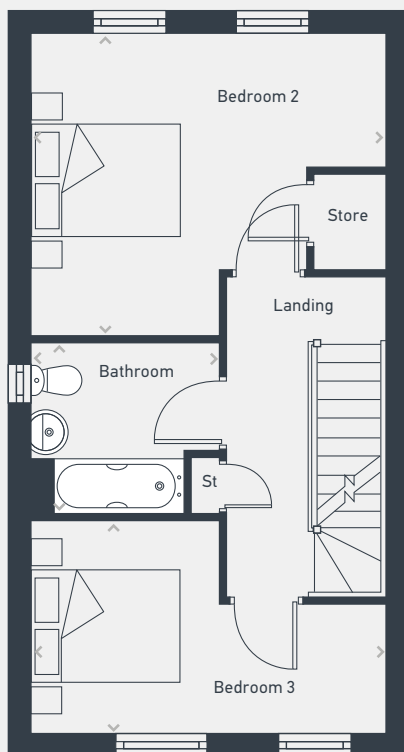
Dominion

The Thetford 3 bed house

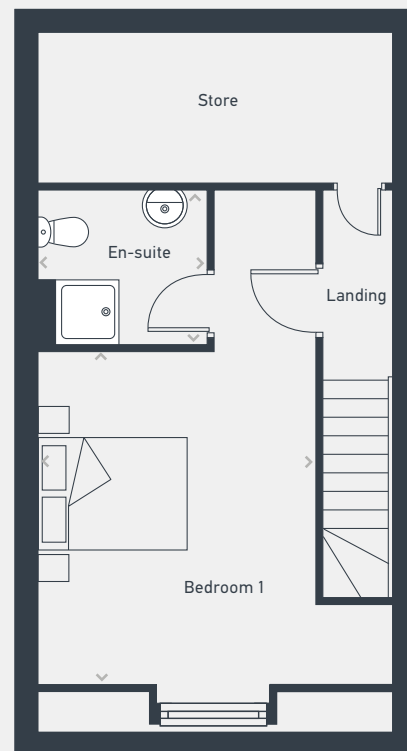
103.49 sq m / 1,114 sq ft



GROUND FLOOR



FIRST FLOOR



SECOND FLOOR

DIMENSIONS	m	ft
Kitchen/Dining	5.61m x 2.92m	18'5" x 9'7"
Lounge	4.53m x 3.26m	14'10" x 10'8"
WC	1.85m x 1.529m	6'1" x 4'11"

DIMENSIONS	m	ft
Bedroom 2	4.53m x 3.85m	14'10" x 12'7"
Bedroom 3	4.53m x 2.74m	14'10" x 8'11"
Bathroom	2.33m x 2.22m	7'7" x 7'3"

DIMENSIONS	m	ft
Bedroom 1	4.29m x 3.52m	14'1" x 11'6"
En-suite	2.16m x 2.01m	7'1" x 6'7"



07812 623 454 | northernnewhomes@lslnewhomes.co.uk

Dominion, Woodfield Way, Doncaster DN4 8SJ

Please note: Plots at Dominion comprise a range of homes and external finishes may vary. Purchasers should check the detail of specific plots with our selling agents. All layouts and floor plans, configurations, maps and information are intended for guidance only and accuracy of this information cannot be relied upon by prospective purchasers who must make their own enquiries to satisfy themselves by inspection or otherwise as to the correct detail. Sizes and dimensions are approximate and subject to change.