

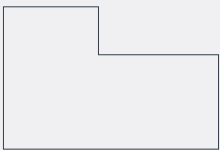
**The
Gwel**

**Lanyon House
1 bedroom apartment**



FF: Plot 8

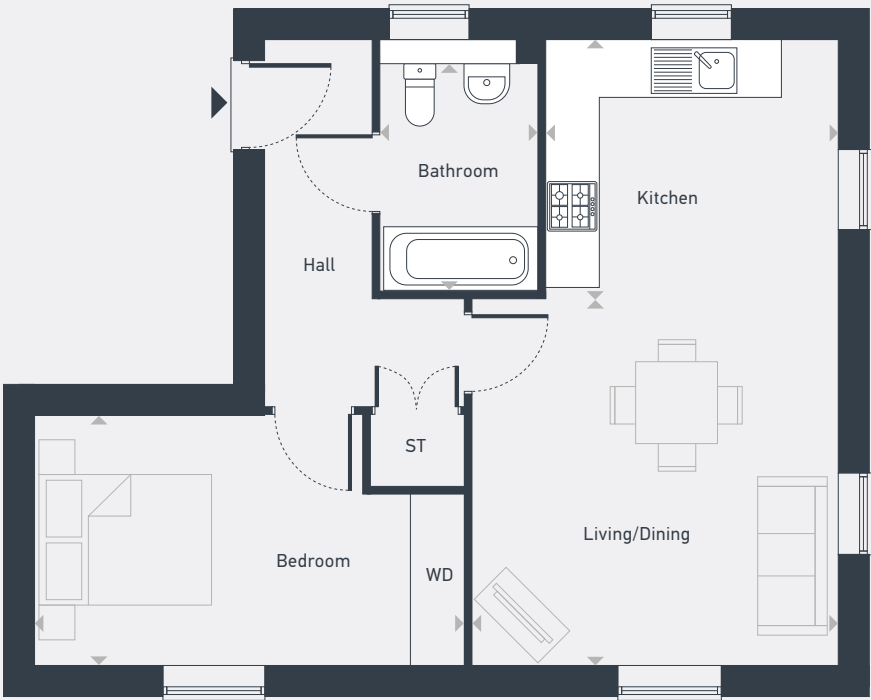
59.8 sq.m / 644 sq.ft



GF



FF



ST: Store WD: Wardrobe HP: Heat Pump

DIMENSIONS	m	ft
Living/Dining	4.03m x 4.02m	13'3" x 13'2"
Kitchen	3.21m x 2.82m	10'6" x 9'3"
Bedroom	4.74m x 2.74m	15'7" x 9'0"
Bathroom	2.73m x 1.75m	9'0" x 5'9"



01872 830 014 | placesforpeople.co.uk/the-gwel
Higher Newham Farm, Truro, TR1 2SN

Please note: All layouts and floor plans, configurations, maps and information are intended for guidance only and accuracy of this information cannot be relied upon by prospective purchasers who must make their own enquiries to satisfy themselves by inspection or otherwise as to the correct detail. September 2025.