



# Chapelton

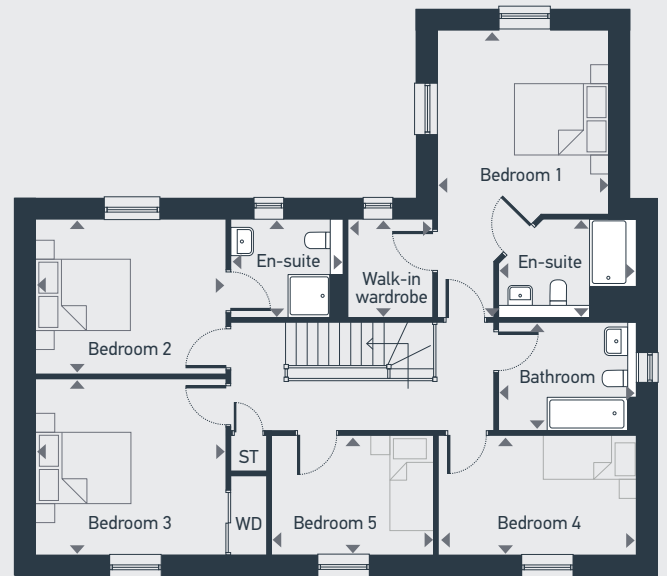
## Dalziel 5 bedroom home

Plots as drawn: 95, 99  
Plots handed: 96

209.94 sq m / 2259.78 sq ft



GROUND FLOOR



FIRST FLOOR

DIMENSIONS	m	ft
Living	3.97m x 7.14m	13'1" x 23'4"
Kitchen / Dining	4.25m x 6.94m	13'11" x 22'10"
Garden Room	3.65m x 4.20m	11'11" x 13'7"
Utility	2.51m x 2.04m	8'4" x 6'9"
WC	1.59m x 2.04m	5'3" x 6'9"

	m	ft
Bedroom 1	3.65m x 3.89m	11'98" x 12'76"
En-suite 1	2.71m x 2.06m	8'10" x 6'9"
Bedroom 1 w/r	1.78m x 2.08m	6'13" x 6'83"
Bedroom 2	3.99m x 3.25m	13'1" x 10'8"
En-suite 2	2.34m x 2.06m	7'67" x 6'9"
Bedroom 3	3.99m x 3.78m	13'09" x 12'40"
Bedroom 4	4.24m x 2.59m	13'11" x 9'8"
Bedroom 5	3.34m x 2.59m	10'95" x 9'8"
Bathroom	2.96m x 2.26m	9'8" x 7'41"



**Please note:** All layouts and floor plans, configurations, maps and information are intended for guidance only and accuracy of this information cannot be relied upon by prospective purchasers who must make their own enquiries to satisfy themselves by inspection or otherwise as to the correct detail.