

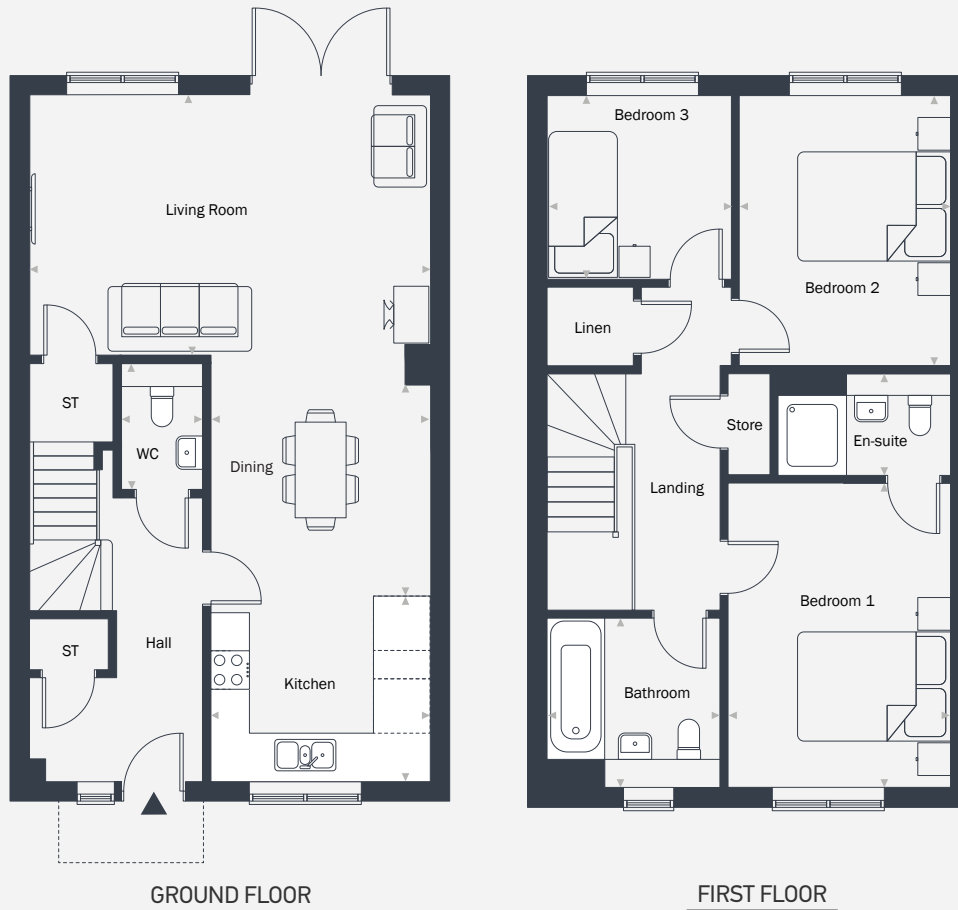
Hartsdown Gardens

The Eshton 3 bedroom home



Plots as drawn: 8, 27, 44, 72 and 78
Handed: 9, 45, 73 and 79

83.18 sq m / 895 sq ft



ST: Store WC: Water Closet

DIMENSIONS	m	ft
Kitchen	2.69m x 2.23m	8'10" x 7'3"
Dining	2.69m x 3.11m	8'10" x 10'2"
Living	4.95m x 3.04m	16'2" x 9'11"
WC	1.05m x 1.65m	3'5" x 5'4"

DIMENSIONS	m	ft
Bedroom 1	2.70m x 3.65m	8'10" x 12'0"
En-suite	2.06m x 1.27m	6'9" x 4'2"
Bedroom 2	2.57m x 3.31m	8'5" x 10'10"
Bedroom 3	2.28m x 2.23m	7'6" x 7'3"
Bathroom	2.15m x 1.97m	7'0" x 6'5"



placesforpeople.co.uk/hartdown-gardens
Hartdown Road, Margate, Kent CT9 5QZ