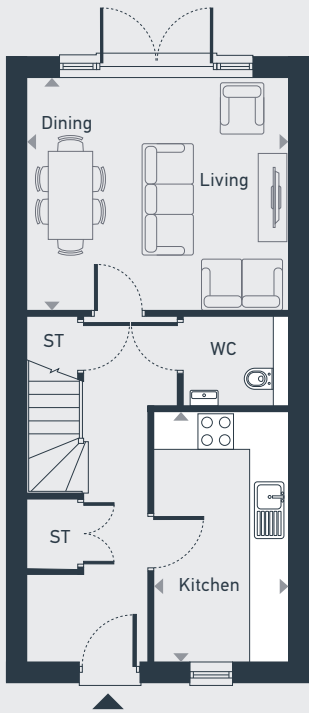


# Meadowside

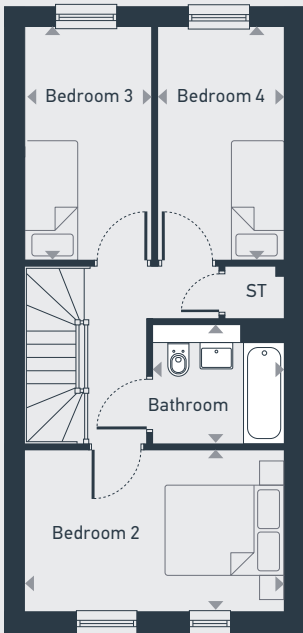
# The Willen A 4 bed house

Plots as drawn: 6, 8, 13 & 15  
Handed: plots 7, 9, 12, 14 & 16

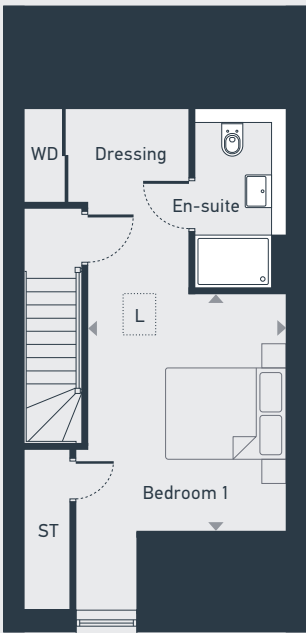
119.47sq.m / 1285.95sqft



GROUND FLOOR



FIRST FLOOR



SECOND FLOOR

ST: Storage L: Loft hatch

DIMENSIONS	m	ft
Living/Dining	4.42m x 3.95m	14'6" x 12'11"
Kitchen	2.28m x 4.24m	7'6" x 13'11"

DIMENSIONS	m	ft
Bedroom 1	3.35m x 4.03m	11'0" x 13'3"
Ensuite	1.55m x 3.05m	5'1" x 10'0"
Bedroom 2	4.49m x 2.75m	14'6" x 9'0"
Bedroom 3	2.18m x 3.95m	7'2" x 12'11"
Bedroom 4	2.15m x 3.95m	7'1" x 12'11"
Bathroom	2.25m x 2.0m	7'5" x 6'7"



01908 562 011 | [stonystatford@brownandmerry.co.uk](mailto:stonystatford@brownandmerry.co.uk)  
Brown and Merry Stony Stratford, 65 High St, Stony Stratford, Milton Keynes, MK11 1AY

Please note: All layouts and floor plans, configurations, maps and information are intended for guidance only and accuracy of this information cannot be relied upon by prospective purchasers who must make their own enquiries to satisfy themselves by inspection or otherwise as to the correct detail.