

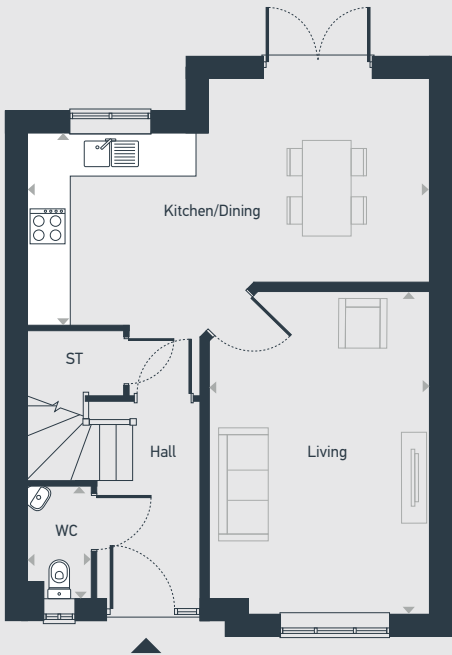


# Seaton Meadows

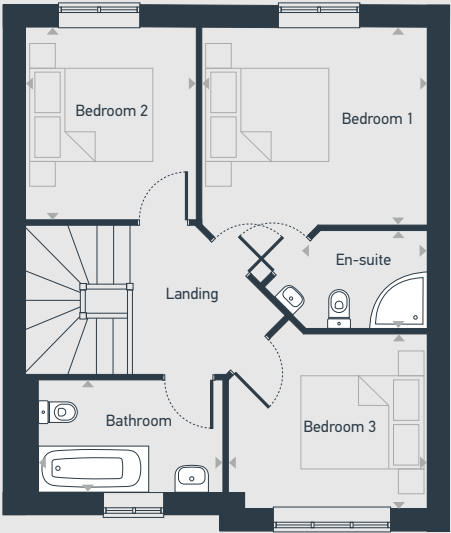
# The Amber 3 bedroom home

Plots as drawn: 64, 72 and 73

80.1 sq.m / 862.2 sq.ft



GROUND FLOOR



FIRST FLOOR

ST: Store WC: Water Closet

DIMENSIONS	m	ft
Kitchen/Dining	5.74m x 2.90m	18'10" x 9'6"
Living	3.14m x 4.60m	10'4" x 15'1"
WC	0.95m x 1.59m	3'0" x 5'3"

DIMENSIONS	m	ft
Bedroom 1	3.19 x 2.83	10'6" x 9'4"
En-suite	2.29 x 1.38	7'6" x 4'6"
Bedroom 2	2.46 x 2.74	8'1" x 9'0"
Bedroom 3	2.82 x 2.48	9'3" x 8'2"
Bathroom	2.83 x 1.59	9'4" x 5'3"



01429 261 351 | [hartlepool@mannersandharrison.co.uk](mailto:hartlepool@mannersandharrison.co.uk) | [placesforpeople.co.uk/seatonmeadows](http://placesforpeople.co.uk/seatonmeadows)  
Seaton Meadows Golden Meadows, Hartlepool, TS25 1GH

Please note: All layouts and floor plans, configurations, maps and information are intended for guidance only and accuracy of this information cannot be relied upon by prospective purchasers who must make their own enquiries to satisfy themselves by inspection or otherwise as to the correct detail.