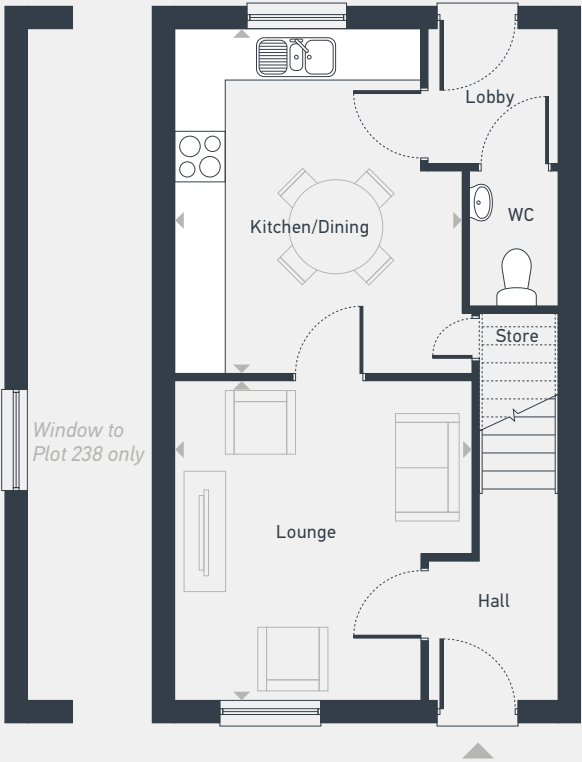


# Weavers Place

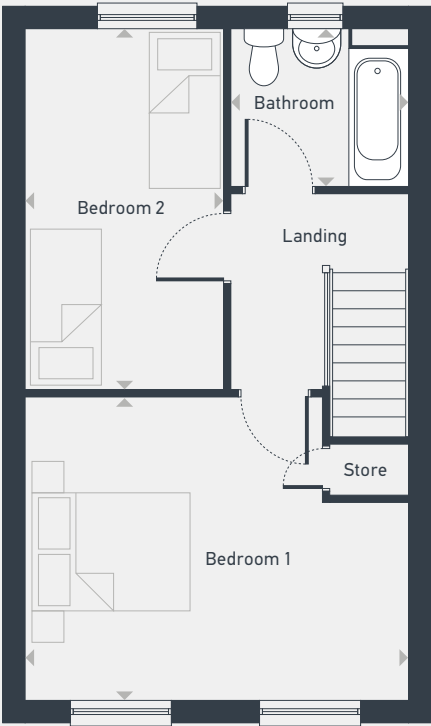
# The Britten 2 bedroom home

Plots 238 & 240 — end-terrace  
Plot 239 — mid-terrace  
Plots 246 & 247 — semi-detached

79.4 sq m / 854 sq ft



GROUND FLOOR



FIRST FLOOR

DIMENSIONS	m	ft
Lounge	3.95m x 3.58m	13'0" x 11'9"
Kitchen/Dining	4.26m x 3.54m	14'0" x 11'7"

DIMENSIONS	m	ft
Bedroom 1	4.71m x 3.75m	15'5" x 12'4"
Bedroom 2	4.46m x 2.43m	14'8" x 8'0"
Bathroom	2.16m x 1.94m	7'1" x 6'4"



01837 380 037 | [placesforpeople.co.uk/weaversplace](https://placesforpeople.co.uk/weaversplace)

Weavers Place, off Budd Close, North Tawton, Devon, EX20 2FJ

**Please note:** All layouts and floor plans, configurations, maps and information are intended for guidance only and accuracy of this information cannot be relied upon by prospective purchasers who must make their own enquiries to satisfy themselves by inspection or otherwise as to the correct detail. Sizes and dimensions approximate and subject to change.