



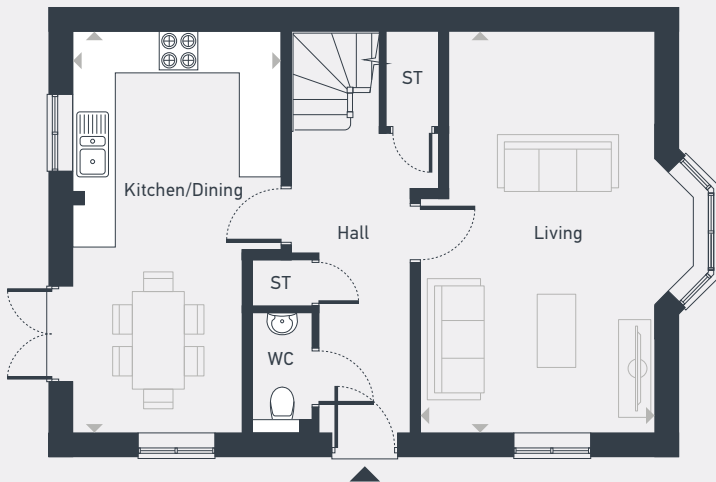


**Meadow
Brook**

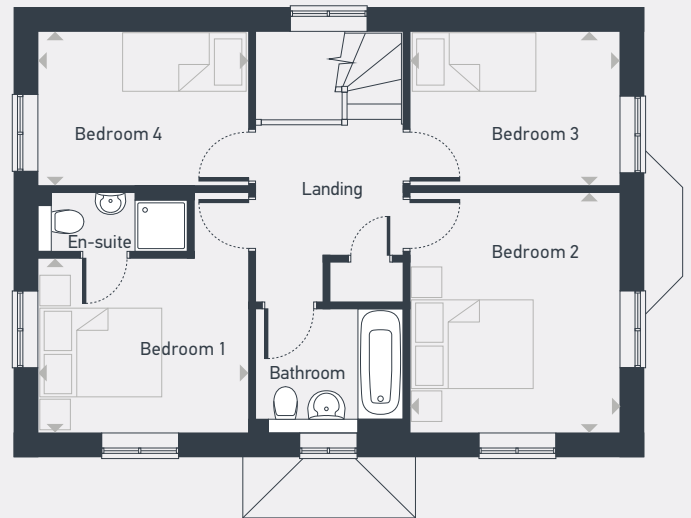
The Banbury A 4 bedroom home

Plot as drawn: 153

1,194.9 sq. ft



GROUND FLOOR



FIRST FLOOR

ST: Store WC: Water Closet

DIMENSIONS	m	ft
Living	6.17m x 3.61m	20'2" x 11'10"
Kitchen/Dining	6.17m x 3.20m	20'2" x 10'5"
Bedroom 1	3.24m x 2.68m	10'7" x 8'9"
Bedroom 2	3.69m x 3.23m	12'1" x 10'7"
Bedroom 3	3.23m x 2.37m	10'7" x 7'9"
Bedroom 4	3.24m x 2.37m	10'7" x 7'9"



01865 575 465 | placesforpeople.co.uk/meadowbrook
High Street, Chalgrove, Oxford OX44 7AF

Please note: All layouts and floor plans, configurations, maps and information are intended for guidance only and accuracy of this information cannot be relied upon by prospective purchasers who must make their own enquiries to satisfy themselves by inspection or otherwise as to the correct detail.