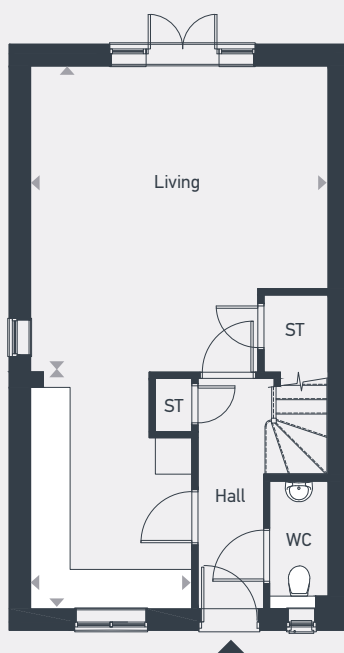
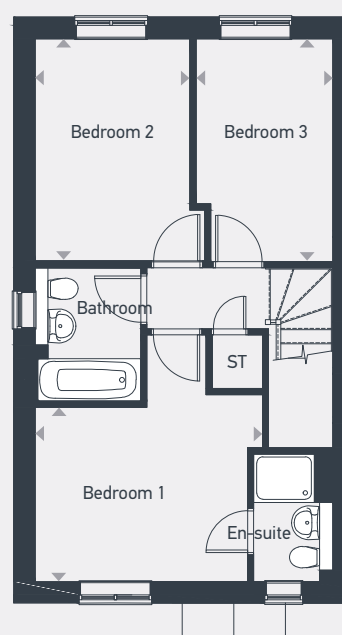


Plots as drawn: 9 and 11
Plots handed: 10 and 12



GROUND FLOOR



FIRST FLOOR

Internal area
87.78sq.m / 944.8sq.ft

DIMENSIONS	m	ft
Living	5.05m x 4.90m	16'7" x 16'1"
Kitchen	3.88m x 2.65m	12'9" x 8'8"
Bedroom 1	3.50m x 2.87m	11'6" x 9'5"
Bedroom 2	3.67m x 2.55m	12'0" x 8'4"
Bedroom 3	3.67m x 2.25m	12'0" x 7'5"