

# Lloyd Park at Port Loop

## The Eden 4 Bedroom Home



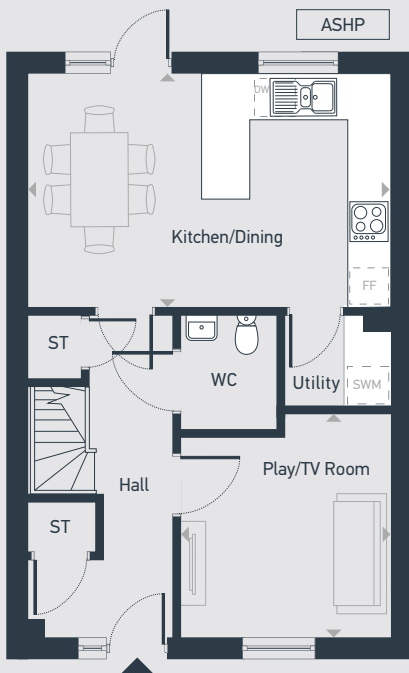
# Lloyd Park at Port Loop

## The Eden 4 Bedroom Home

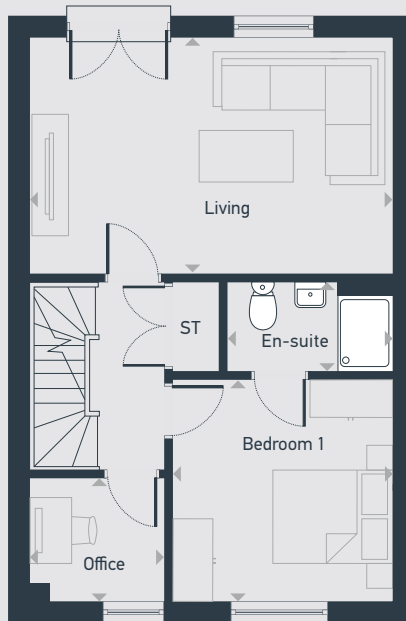
Plots as drawn: 1-10, 52-68

148.5 sq.m / 1597 sq.ft

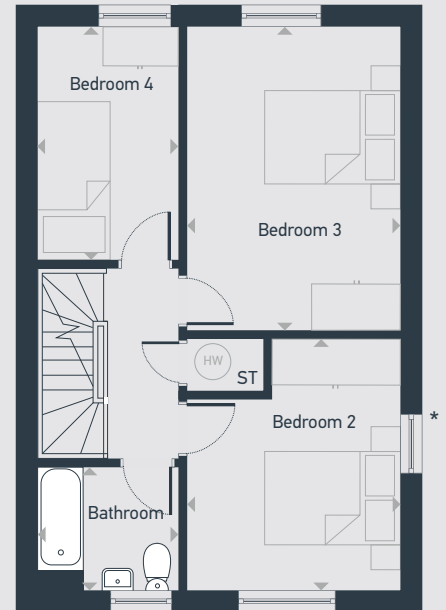
\* Windows only to end of terrace plots:  
2, 6, 52, 61



GROUND FLOOR



FIRST FLOOR



SECOND FLOOR

WC: Water Closet ST: Store SWM: Space for Washing Machine FF: Integrated Fridge Freezer DW: Dishwasher ASHP: Air Source Heat Pump HW: Hot Water Cylinder

DIMENSIONS	m	ft
Kitchen/Dining	5.65m x 3.53m	18'6" x 11'7"
Play room / TV room	3.51m x 3.26m	11'6" x 10'8"
Living	5.65m x 3.60m	18'8" x 11'10"

DIMENSIONS	m	ft
Bedroom 1	3.49m x 3.28m	11'5" x 10'9"
En-suite	2.60m x 1.47m	8'6" x 4'9"
Bedroom 2	3.95m x 3.28m	12'11" x 10'9"
Bedroom 3	4.70m x 3.28m	15'5" x 10'9"
Bedroom 4	3.60m x 2.28m	11'19" x 7'5"
Office	2.28m x 1.96m	7'5" x 6'5"
Bathroom	2.22m x 1.96m	7'3" x 6'5"



centralandnorthsales@placesforpeople.co.uk | placesforpeople.co.uk/lloyd-park  
Freeth Street, Port Loop, B16 0FD

Please note: All layouts and floor plans, configurations, maps and information are intended for guidance only and accuracy of this information cannot be relied upon by prospective purchasers who must make their own enquiries to satisfy themselves by inspection or otherwise as to the correct detail. The artist's impression is intended as a guide only and that actual finishes may vary. For more details, please speak to your sales advisor.