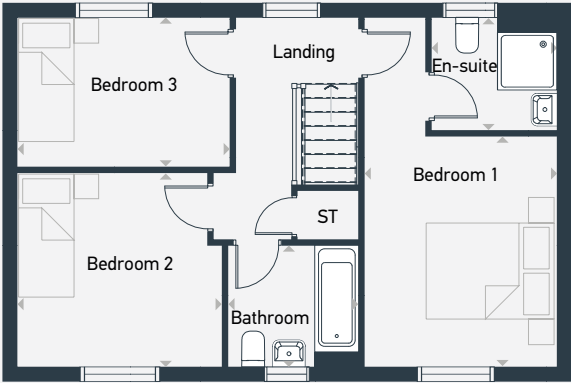




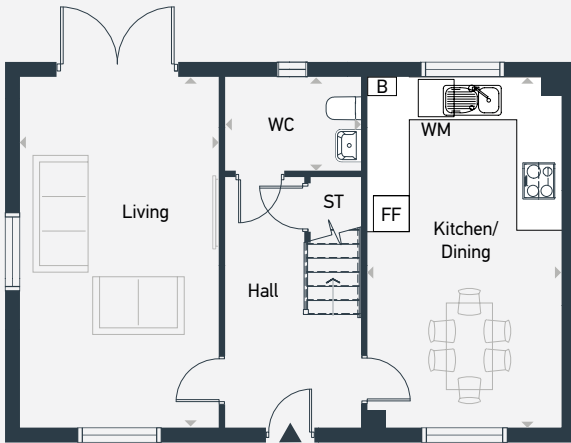
Artists Impression

Plots as drawn: 21,22,23,50 and 51
Handed: 30,31,32,67,81,84 and 89

96.28 sq.m / 1036 sq.ft



FIRST FLOOR



GROUND FLOOR

FF: Fridge/Freezer ST: Store WM: Washing Machine WC: Water Closet B: Boiler

DIMENSIONS	m	ft
Kitchen/Dining	5.58m x 3.02m	18'4" x 9'11"
Living	5.58m x 3.12m	18'4" x 10'3"
WC	2.18m x 1.46m	7'2" x 4'10"

DIMENSIONS	m	ft
Bedroom 1	5.58m x 3.07m	18'4" x 10'1"
En-suite	1.97m x 1.81m	6'6" x 5'11"
Bedroom 2	3.19m x 3.10m	10'6" x 10'2"
Bedroom 3	3.35m x 2.39m	11'0" x 7'10"
Bath	2.15m x 1.91m	7'1" x 6'3"



07971 362 256 | placesforpeople.co.uk/goldsmiths-green
Gipsy Lane, Kettering, Northamptonshire, NN16 8UB