

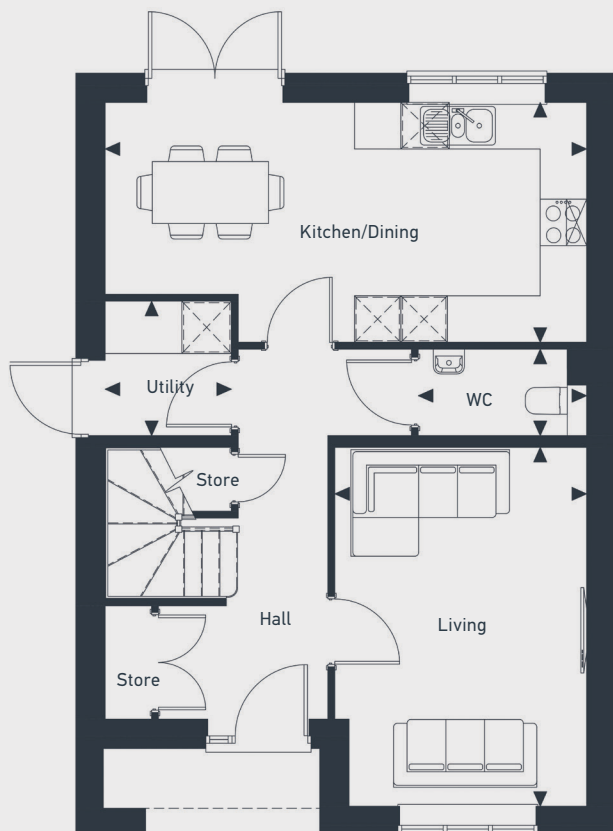
Whistle Wood

Plots

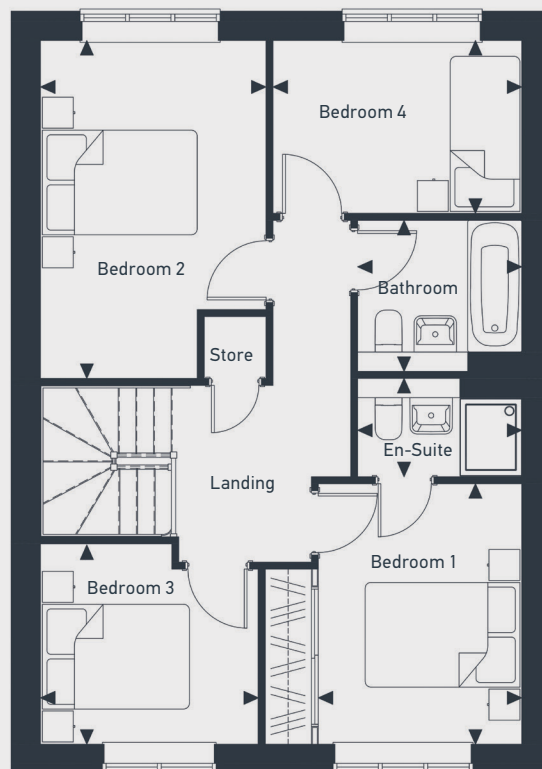
14, 15, 19, 24, 44, 45, 49,
52, 53, 54, 55, 68, 77

The Peamore 4 bedroom home

111 sq m / 1194 sq ft



GROUND FLOOR



FIRST FLOOR

DIMENSIONS	m	ft
Kitchen/Dining	6.22m x 3.09m	20'4" x 10'1"
Living	4.63m x 3.25m	15'2" x 10'8"
WC	2.17m x 1.11m	7'1" x 3'7"

DIMENSIONS	m	ft
Bedroom 1	3.36m x 2.63m	11'0" x 8'7"
En-Suite	2.12m x 1.27m	6'11" x 4'2"
Bedroom 2	4.35m x 2.91m	14'3" x 9'6"
Bedroom 3	2.81m x 2.57m	9'3" x 8'5"
Bedroom 4	3.21m x 2.23m	10'6" x 7'3"
Bathroom	2.12m x 1.95m	6'11" x 6'4"



01837 380 037 | placesforpeople.co.uk/whistle-wood-bordon

Station Road, Bordon, Hampshire, GU35 0LG

Please note: All layouts and floor plans, configurations, maps and information are intended for guidance only and accuracy of this information cannot be relied upon by prospective purchasers who must make their own enquiries to satisfy themselves by inspection or otherwise as to the correct detail. Sizes and dimensions approximate and subject to change.