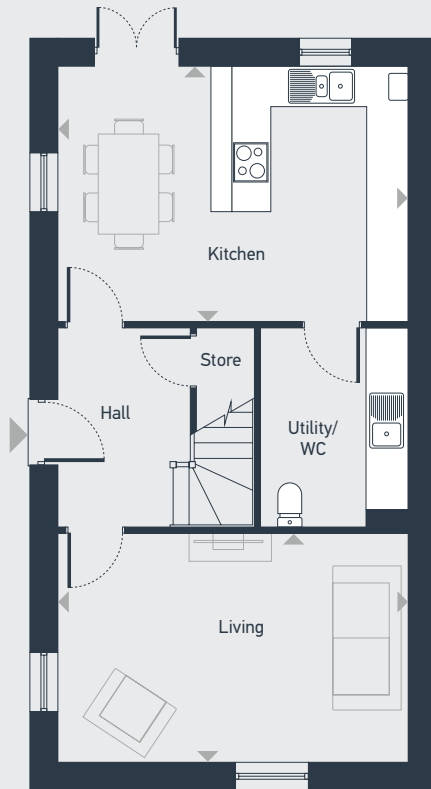




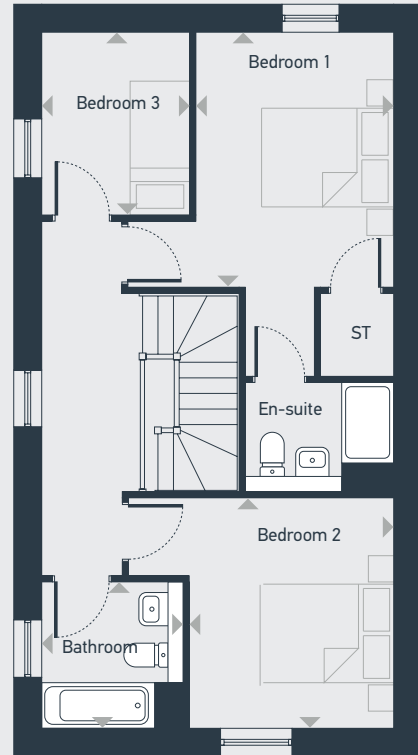
# Tornagrain

## The Cadell 3 bedroom house

110.8 sq m / 1192.4 sq ft



GROUND FLOOR



FIRST FLOOR

DIMENSIONS	m	ft
Living	5.3m x 3.5m	17'3" x 11'4"
Kitchen / Dining	5.3m x 3.8m	17'3" x 12'7"
WC	3.0m x 2.2m	9'9" x 7'2"

	m	ft
Bedroom 1	3.8m x 3.0m	12'7" x 9'8"
En-suite	2.3m x 1.7m	7'6" x 5'5"
Bedroom 2	3.5m x 2.8m	11'5" x 9'2"
Bathroom	2.2m x 2.1m	7'3" x 6'11"



01463 830 490 | [placesforpeople.co.uk/tornagrain](https://placesforpeople.co.uk/tornagrain)  
6 Bishop's Hill Road, Tornagrain IV2 8AR

**Please note:** All layouts and floor plans, configurations, maps and information are intended for guidance only and accuracy of this information cannot be relied upon by prospective purchasers who must make their own enquiries to satisfy themselves by inspection or otherwise as to the correct detail. Sizes and dimensions approximate and subject to change.