

# Dominion

Block E  
**The Kurne**  
**2 bed apartment**

---

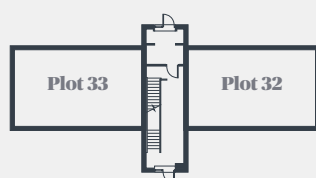
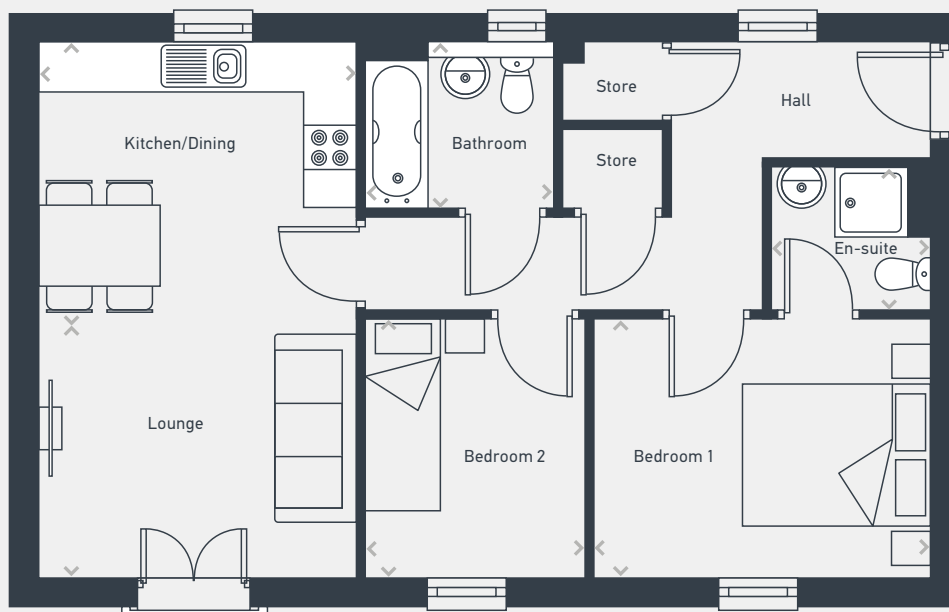


# Dominion

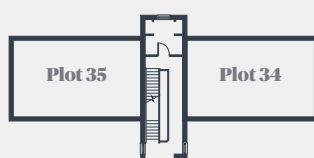
Plots 32, 34, 36 and 38 are handed

## Block E The Kurne 2 bed apartment

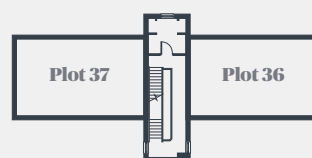
64.06sq m / 690 sq ft



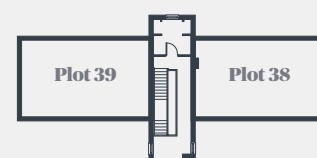
GROUND FLOOR



FIRST FLOOR



SECOND FLOOR



THIRD FLOOR

DIMENSIONS	m	ft
Kitchen/Dining	3.68m x 3.16m	12'1" x 10'4"
Lounge	3.78m x 3.14m	12'5" x 10'4"

DIMENSIONS	m	ft
Bedroom 1	4.87m x 3.64m	16'0" x 11'11"
Bedroom 2	3.14m x 2.68m	10'4" x 8'10"
Bathroom	2.15m x 1.91m	7'1" x 6'3"
En-suite	1.90m x 1.70m	6'3" x 5'7"



07812 623 454 | [northernnewhomes@lslnewhomes.co.uk](mailto:northernnewhomes@lslnewhomes.co.uk)

Dominion, Woodfield Way, Doncaster DN4 8SJ

Please note: Plots at Dominion comprise a range of homes and external finishes may vary. Purchasers should check the detail of specific plots with our selling agents. All layouts and floor plans, configurations, maps and information are intended for guidance only and accuracy of this information cannot be relied upon by prospective purchasers who must make their own enquiries to satisfy themselves by inspection or otherwise as to the correct detail. Sizes and dimensions are approximate and subject to change.