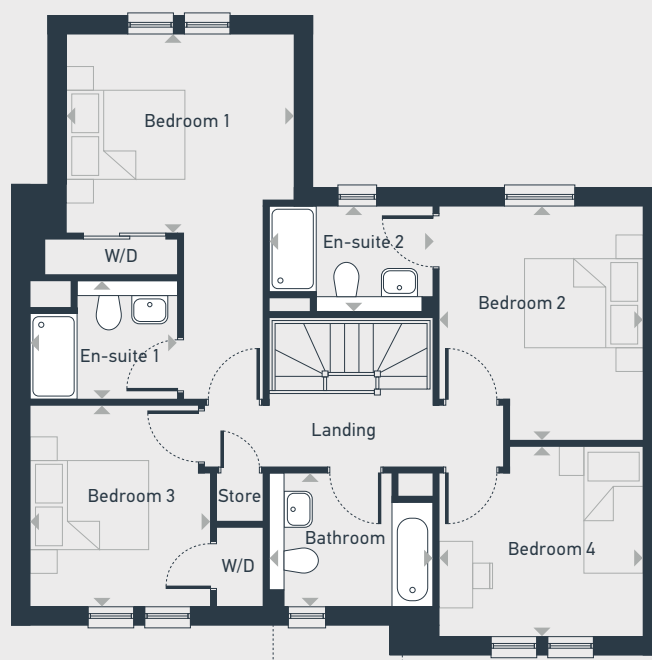


GROUND FLOOR



FIRST FLOOR

| DIMENSIONS | m | ft |
|----------------|---------------|----------------|
| Living | 7.18m x 3.41m | 23'6" x 11'3" |
| Kitchen/Dining | 6.78m x 3.91m | 22'2" x 12'10" |
| Garden Room | 3.80m x 2.80m | 12'4" x 9'2" |
| Utility/WC | 2.75m x 1.75m | 9'0" x 5'9" |

| DIMENSIONS | m | ft |
|------------|---------------|----------------|
| Bedroom 1 | 3.80m x 3.33m | 12'6" x 10'9" |
| En-suite 1 | 2.45m x 2.00m | 8'1" x 6'5" |
| Bedroom 2 | 3.93m x 3.41m | 12'11" x 11'2" |
| En-suite 2 | 2.75m x 1.75m | 9'0" x 5'7" |
| Bedroom 3 | 3.35m x 3.01m | 10'12" x 9'9" |
| Bedroom 4 | 3.41m x 3.15m | 11'2" x 10'4" |
| Bathroom | 2.75m x 2.20m | 9'0" x 7'2" |



07483 349 425 | placesforpeople.co.uk/longniddry
Longniddry Village, 4 Coal Rd, Longniddry EH32 0FP

Please note: All CGIs, layouts and floor plans, configurations, maps and information are intended for guidance only and accuracy of this information cannot be relied upon by prospective purchasers who must make their own enquiries to satisfy themselves by inspection or otherwise as to the correct detail. Sizes and dimensions approximate and subject to change.