

# Elveden Place

**The Derwent  
3 bedroom home**

---

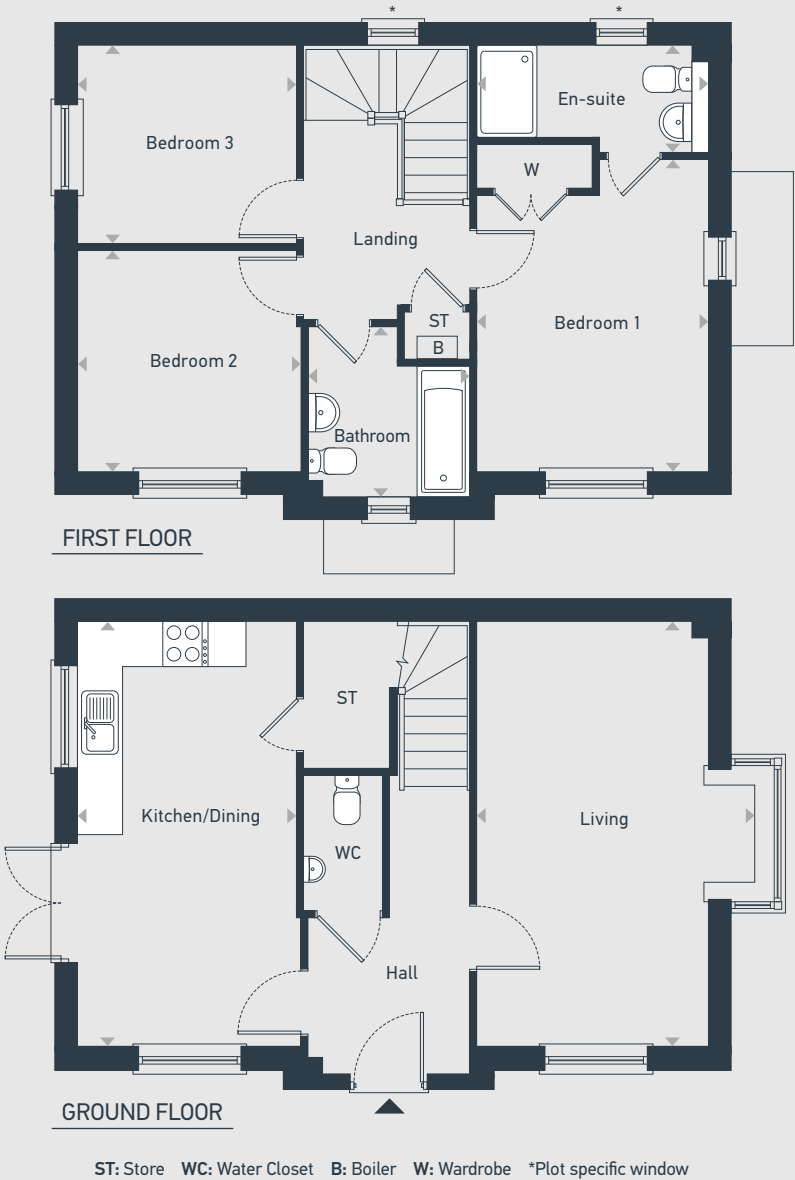


Elveden  
Place

The Derwent  
3 bedroom home

Plots as drawn: 80 and 123  
Handed: 79 and 130

1,053 sq.ft / 97.83 sq.m



DIMENSIONS	m	ft
Living	5.63m x 3.71m	18'6" x 12'2"
Kitchen/Dining	5.63m x 2.88m	18'6" x 9'5"

DIMENSIONS	m	ft
Bedroom 1	4.14m x 3.05m	13'7" x 10'0"
En-suite	3.10m x 1.44m	10'2" x 4'9"
Bedroom 2	2.94m x 2.92m	9'8" x 9'7"
Bedroom 3	2.88m x 2.62m	9'5" x 8'7"
Bathroom	2.96m x 2.13m	9'9" x 7'2"



placesforpeople.co.uk/elvedenplace  
Elveden Place, off Norwich Road, Thetford, IP24 2RF

Please note: All layouts and floor plans, configurations, maps and information are intended for guidance only and accuracy of this information cannot be relied upon by prospective purchasers who must make their own enquiries to satisfy themselves by inspection or otherwise as to the correct detail.