

Thistleton Park

The Harrington 4 bedroom home

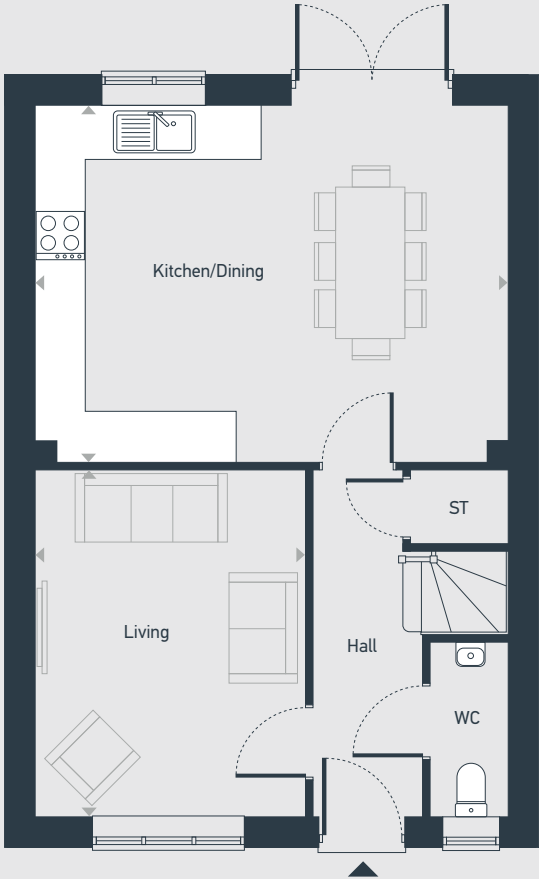


Thistleton Park

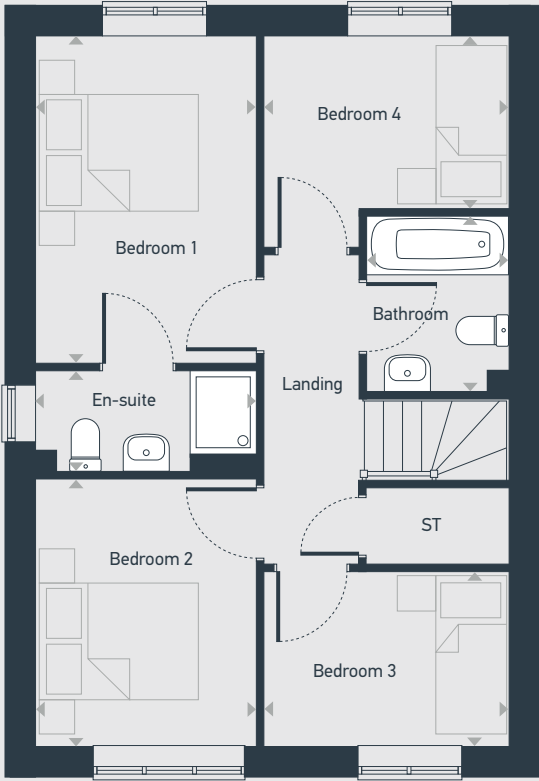
The Harrington 4 bedroom home

Plots as drawn: 53 and 72
Handed: 54 and 73

95.24 sq.m / 1,025 sq.ft



GROUND FLOOR



FIRST FLOOR

ST: Store WC: Water Closet

DIMENSIONS	m	ft
Living	4.13m x 3.21m	13'7" x 10'6"
Kitchen/Dining	5.63m x 4.24m	18'6" x 13'11"

DIMENSIONS	m	ft
Bedroom 1	3.90m x 2.63m	12'9" x 8'8"
En-suite	2.63m x 1.20m	8'8" x 3'11"
Bedroom 2	3.17m x 2.63m	10'4" x 8'8"
Bedroom 3	2.91m x 2.07m	9'6" x 6'9"
Bedroom 4	2.91m x 2.06m	9'6" x 6'9"
Bathroom	2.08m x 1.70m	6'10" x 5'7"



01253 623511 | centralandnorthsales@placesforpeople.co.uk | placesforpeople.co.uk/thistletonpark
Victoria Road, West Thornton, Cleveleys, Lancashire FY5 3LG

Please note: All layouts and floor plans, configurations, maps and information are intended for guidance only and accuracy of this information cannot be relied upon by prospective purchasers who must make their own enquiries to satisfy themselves by inspection or otherwise as to the correct detail.